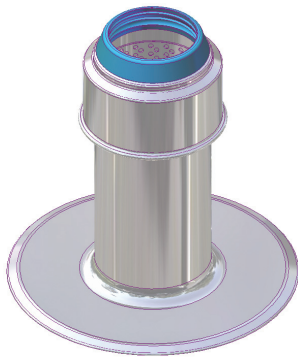


ROOF SPECIALTIES

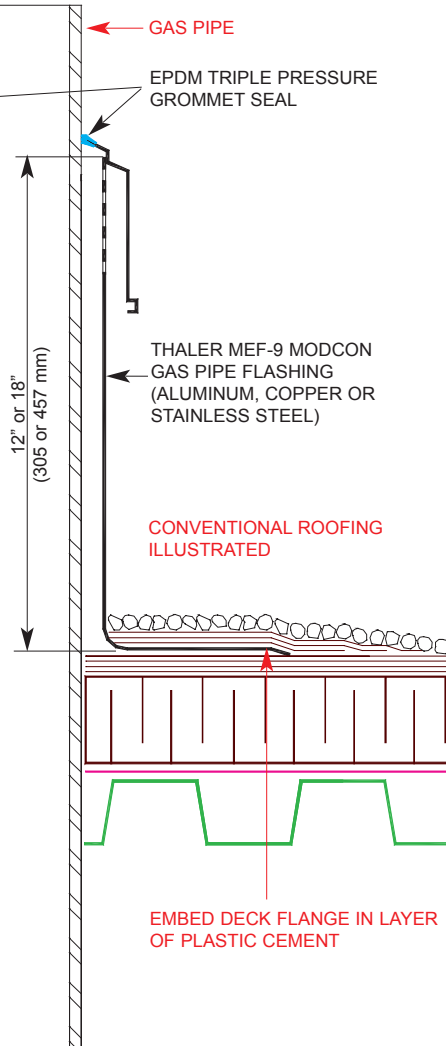
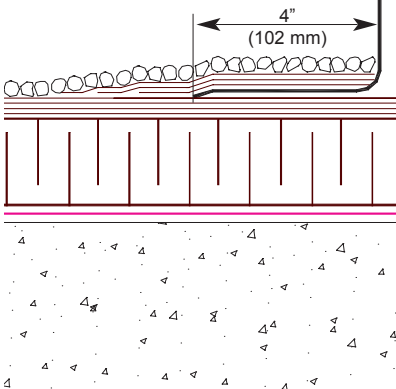
**MEF-9
MODCON GAS
PIPE FLASHING**



SUITABLE FOR UP TO
8" (203 mm) DIAMETER
GAS PIPE

When ordering, add -12 or -18 to end of model number to specify a 12" or 18" high flashing (e.g. MEF-9A-12).

CONVENTIONAL ROOFING ILLUSTRATED



INSTALLATION

"Installation Instructions" are provided with every Thaler product. Essentially, Thaler MEF-9 Modcon Gas Pipe Flashings are installed by placing the flashing over the gas pipe, installing the removable collar, and as follows:

BUR: Set deck flange in layer of plastic cement and flash in with 3 overlapping layers of felt flashing.

ModBit: Torch membrane until bitumen is fluid and set flange into fluid. Flash in flange with two overlapping layers of ModBit and seal with asphalt sealer.

Single Ply: Set deck flange in layer of membrane adhesive and extend single ply up sleeve to highest elevation possible and clamp membrane to Flashing. Note: for PVC membrane, specify PVC coated flashing by adding suffix P to end of model number, e.g. MEF-9-A-P; weld roofing to deck flange using PVC torch.

Precautions: Apply an asphaltic or other type protective coating to aluminum flashing to a height of 2" (51 mm) above a limestone ballast to avoid corrosive reaction. Also, if coating deck flange with bituminous paint on site, allow 24 hours for drying before applying roof membrane.

Ordering and Availability: Specify material required by adding appropriate suffix to model number e.g. MEF-9-A for aluminum, etc. Available throughout North America. Contact Thaler for list of distributors and current cost information. Most products are readily available from stock.

DESCRIPTION

Thaler MEF-9 Modcon Gas Pipe Flashings consist of a metal flashing sleeve with perforated collar and integral deck flange, and removable collar with EPDM Triple Pressure Grommet Seal. Available in aluminum, copper, and stainless steel. Diameter: Suitable for up to 8" (203 mm) gas pipe. Height: 12" (305 mm) is standard. 18" (457 mm) is available.

Prominent Features: Perforated collar allows escaped gas to vent to the exterior of the building.

Options: See Size Chart on reverse side of page. PVC coated deck flange for PVC roof membrane. Bituminous painted deck flange for BUR and ModBit roof membrane. Split flashing (SPJ-2) is available as an alternative if sleeve cannot fit over vent stack.

RECOMMENDED USE

Suitable for gas pipe and similar applications.

WARRANTY

20 year warranty against leaks, condensation and defects in materials and/or manufacture when installed in accordance with Thaler "Installation Instructions". Warranty not valid where metal components are subjected to unusually harsh corrosive environments e.g. pulp mills, mining facilities and similar applications. Stainless steel only is recommended for these installations.

MAINTENANCE

No maintenance required (maintenance free).

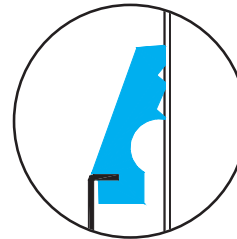
SPECIFICATION (Short Form)

Gas pipe flashings: Thaler MEF-9 Modcon Gas Pipe Flashing [12" (305 mm)] [18" (457 mm)] high flashing with perforated neck; removable cap with EPDM Triple Pressure Grommet Seal; [0.064" (1.6 mm) mill finish 1100-0T alloy aluminum] [.032" (0.831 mm) 24 oz. copper] [.031" (0.79 mm) 22 ga. Type 304 stainless steel]; [PVC coated deck flange] [bituminous painted deck flange]; manufactured by Thaler Metal Industries, 1-800-387-7217 (Mississauga, Ontario, Canada) or 1-800-576-1200 (New Braunfels, TX), installed as per manufacturer's written instructions. Provide 20 year warranty against leaks, condensation and defects in materials and/or manufacture.

Sizes Chart

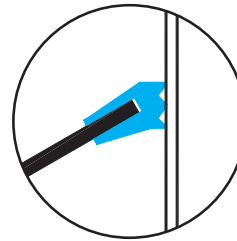
This chart illustrates the different EPDM Grommet Seals and Base Seals which will be used for each size conduit, vent pipe, etc.

Trade Size	Actual Size (inches)	Actual Size (millimeters)	Grommet Supplied
1/2"	.84"	(21 mm)	B
3/4"	1.05"	(27 mm)	B
1"	1.315"	(33 mm)	B
1-1/4"	1.66"	(42 mm)	B
1-1/2"	1.9"	(48 mm)	A
2"	2.375"	(60 mm)	A
2-1/2"	2.875"	(73 mm)	B
3"	3.5"	(89 mm)	A
3-1/2"	4"	(102 mm)	A
4"	4.5"	(114 mm)	A
5"	5.563"	(141 mm)	A
6"	6.625"	(168 mm)	A



Type A

EPDM Triple
Pressure Grommet
Seal (Injection
Molded)



Type B

EPDM Triple
Pressure Grommet
Seal (Extruded)