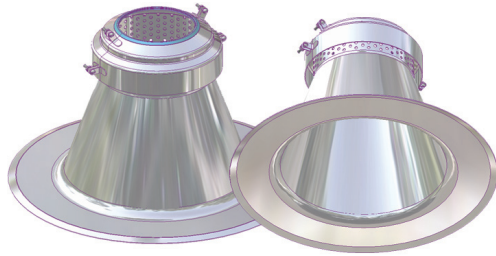
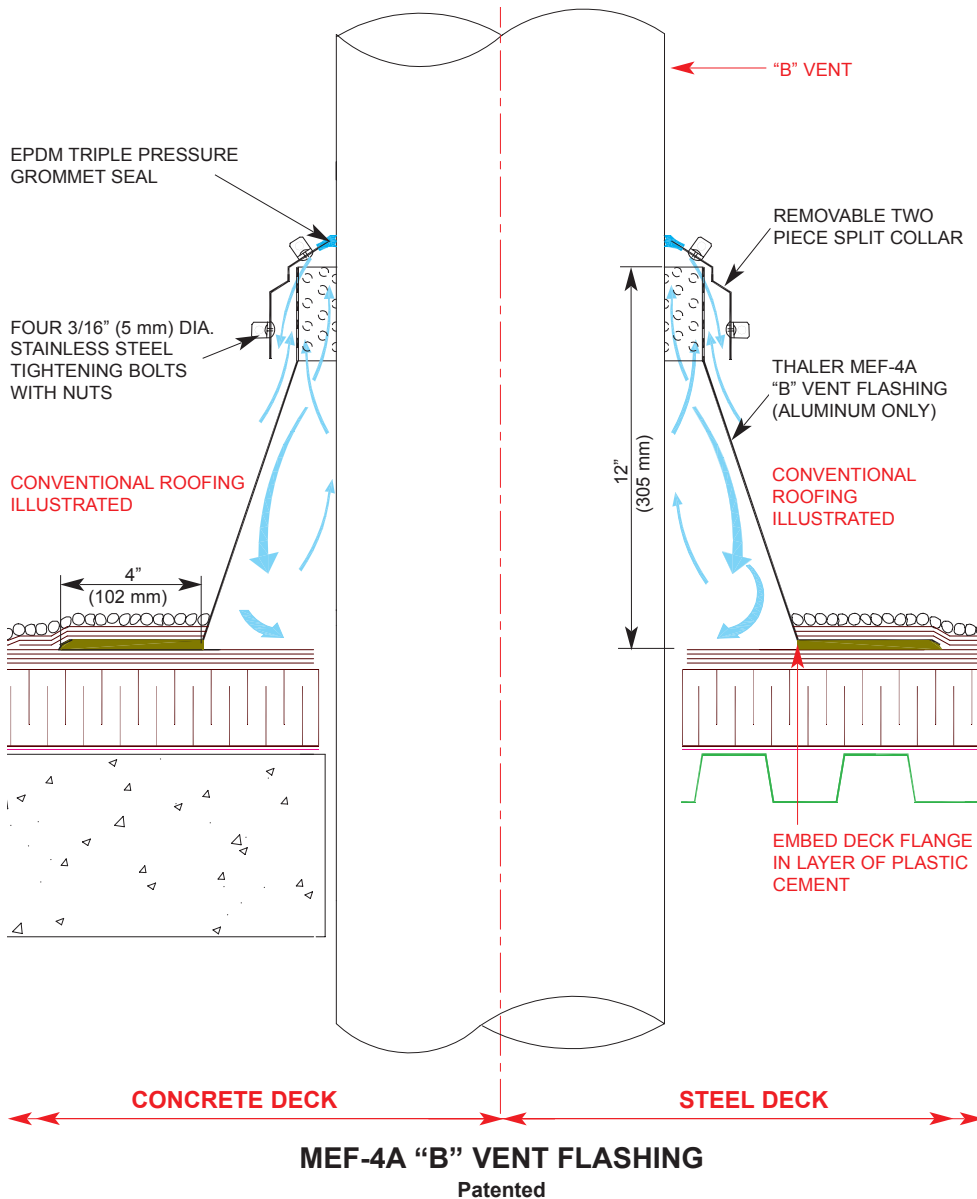


MEF-4A "B" VENT FLASHINGS



AVAILABLE TO SUIT "B" VENTS FROM 3" (76 mm) UP TO 17" (432 mm) DIA.



DESCRIPTION

Thaler MEF-4A "B" Vent Flashing consists of an aluminum flashing sleeve with integral deck flange, matching two piece collar, EPDM Triple Pressure Grommet Seal.

Available in aluminum only.

Diameter: Sleeve diameter ranges from 5-1/2" (140 mm) to 13-1/2" (343 mm) depending on "B" Vent size. Available also up to 17" (432 mm) vent diameter size. See MEF-4A Sizes Chart on reverse side of page. Height: 12" (305 mm) is standard.

Prominent Features: Maintenance Free. Never needs caulking (see Thaler EPDM Flashing Seals literature).

Options: PVC coated deck flange for PVC roof membrane. Bituminous painted deck flange for BUR and ModBit roof membrane. Split flashing (SPJ-2) is available as an alternative if sleeve cannot fit over vent stack.

RECOMMENDED USE

For "B" Vents used in connection with gas heaters. Not intended for "hot pipes" (see Thaler Hot Pipe Flashing literature).

WARRANTY

20 year warranty against leaks, condensation and defects in materials and/or manufacture when installed in accordance with Thaler "Installation Instructions". Warranty not valid where metal components are subjected to unusually harsh corrosive environments e.g. pulp mills, mining facilities and similar applications. Stainless steel only is recommended for these installations.

MAINTENANCE

No maintenance required (maintenance free).

SPECIFICATION (Short Form)

"B" Vent flashing: Thaler MEF-4A "B" Vent flashing, 12" (305 mm) high with integral deck flange and matching two piece collar with EPDM Triple Pressure Grommet Seal ;.064" (1.6 mm) mill finish 1100-OT alloy aluminum; diameter to suit "B" Vent diameter; [PVC coated deck flange][bituminous painted deck flange]; manufactured by Thaler Metal Industries, 1-800-387-7217 (Mississauga, Ontario, Canada) or 1-800-576-1200 (New Braunfels, TX), installed as per manufacturer's written instructions. Provide 20 year warranty against leaks, condensation and defects in materials and/or manufacture.

INSTALLATION

"Installation Instructions" are provided with every Thaler product. Essentially, Thaler MEF-4A "B" Vent Flashings are installed by placing the flashing over the vent stack and as follows:

BUR: Set deck flange in layer of plastic cement and flash in with 3 overlapping layers of felt flashing.

ModBit: Torch membrane until bitumen is fluid and set flange into fluid. Flash in flange with two overlapping layers of ModBit and seal with asphalt sealer. Do not overheat (melt) EPDM Base Seal.

Single Ply: Set deck flange in layer of membrane adhesive and extend single ply up sleeve to highest elevation possible and clamp membrane to flashing. Note: for PVC membrane, specify PVC coated flashing by adding suffix P to end of model number, e.g. MEF-4A-P; weld roofing to deck flange using PVC torch.

Precautions: Apply an asphaltic or other type protective coating to aluminum flashing to a height of 2" (51 mm) above a limestone ballast to avoid corrosive reaction. Also, if coating deck flange with bituminous paint on site, allow 24 hours for drying before applying roof membrane.

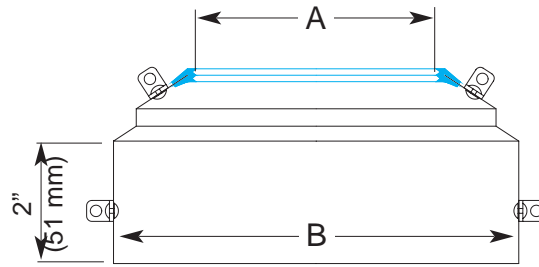
Ordering and Availability: Available throughout North America. Contact Thaler for list of distributors and current cost information. Most products are readily available from stock.

Continued on reverse...

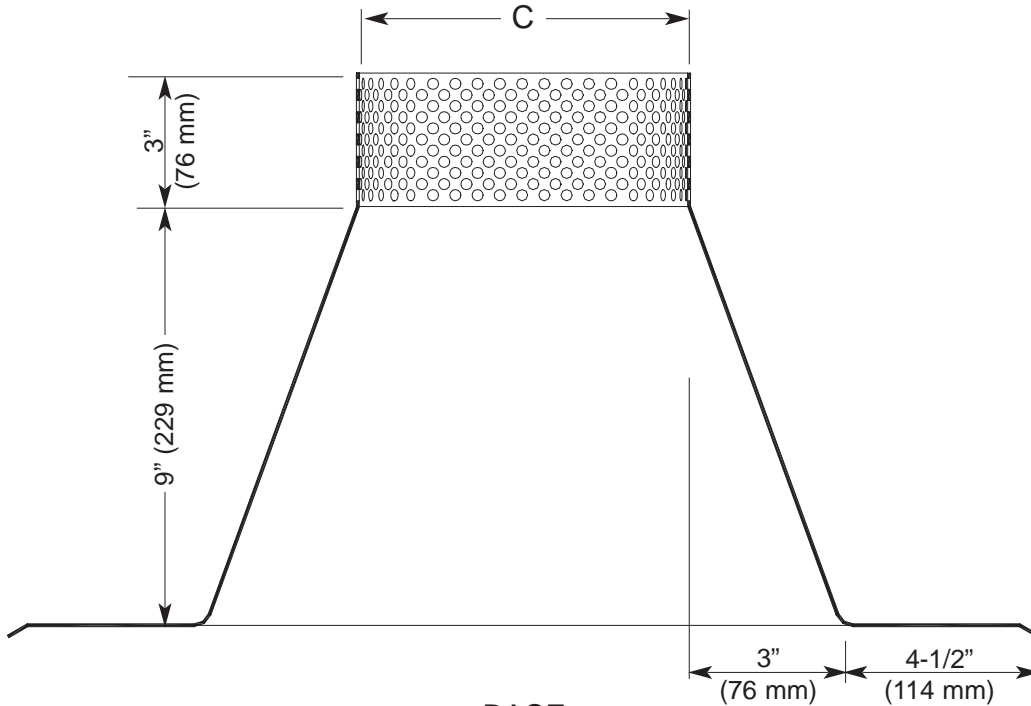
M-4A SIZES CHART

The size of the collar and base is determined by the size of the "B" Vent. In the chart below, dimension "A" represents the outside diameter of the "B" Vent. Dimensions "B" and "C" are the corresponding collar and base sizes.

"B" Vent Diameter (A)	Collar Diameter (B)	Base Diameter (C)
From 3" (76 mm) up to 5" (127 mm)	6-1/2" (165 mm)	5-1/2" (140 mm)
From 5-1/8" (130 mm) up to 7" (178 mm)	8-1/2" (216 mm)	7-1/2" (191 mm)
From 7-1/8" (181 mm) up to 8" (203 mm)	9-1/2" (241 mm)	8-1/2" (216 mm)
From 8-1/8" (206 mm) up to 9" (229 mm)	10-1/2" (267 mm)	9-1/2" (241 mm)
From 9-1/8" (232 mm) up to 11" (279 mm)	12-1/2" (318 mm)	11-1/2" (292 mm)
From 11-1/8" (283 mm) up to 13" (432 mm)	14-1/2" (368 mm)	13-1/2" (343 mm)
From 13-1/8" (333 mm) up to 15" (381 mm)	16-1/2" (419 mm)	15-1/2" (394 mm)
From 15-1/8" (384 mm) up to 17" (432 mm)	18-1/2" (470 mm)	17-1/2" (445 mm)



COLLAR



BASE