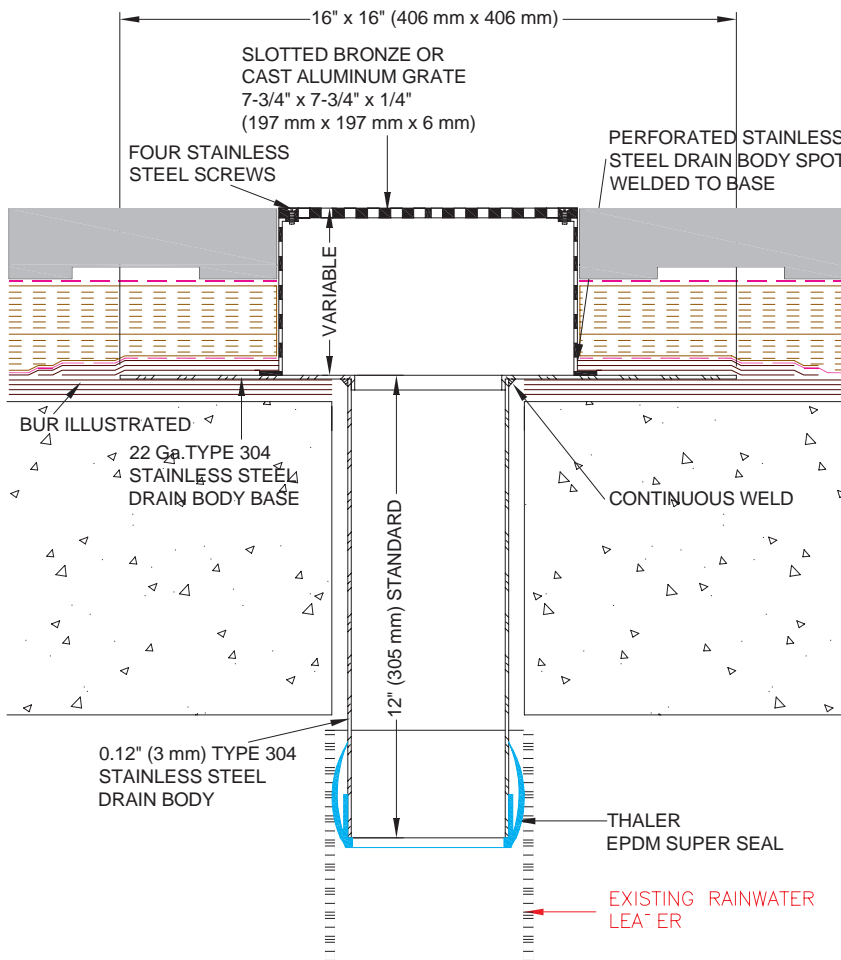
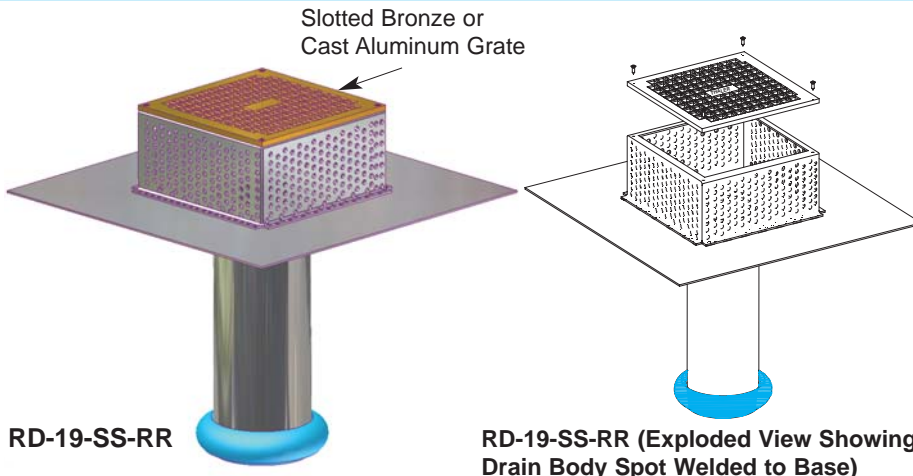


ROOF SPECIALTIES RD-19-SS-RR STAINLESS STEEL RETROFIT ROOF DRAIN (For Promenade Decks or Terraces)



RD-19-SS-RR STAINLESS STEEL RETROFIT ROOF DRAIN (For Promenade Decks or Terraces)

INSTALLATION

"Installation Instructions" are provided with every Thaler product. Essentially, the RD-19-SS-RR retrofit roof drain is installed by fitting the drain outlet into the rainwater leader, by slowly rotating and pushing down into position, and as follows:

BUR: Set drain flange over membrane in layer of mastic cement and flash in with 3 overlapping layers of felt flashing.

ModBit: Torch membrane until bitumen is fluid and set drain flange into fluid. Flash in flange with two overlapping layers of ModBit and seal with asphalt sealer.

Single Ply: Set drain flange in layer of membrane adhesive before applying membrane over flange. Note: for PVC membrane, specify PVC coated drain flange by adding suffix P to end of model number, e.g. RD-19-RR-P; weld roofing to drain flange using PVC torch.

Precautions: If coating drain flange with a bituminous paint on site, allow 24 hours for drying before applying roof membrane.

Ordering: Available throughout North America. Contact Thaler for list of distributors and current cost information. Most products are readily available from stock.

DESCRIPTION

The Thaler RD-19-SS-RR Retrofit Roof Drain consists of a removable, slotted bronze or cast aluminum grate, perforated stainless steel drain body and straight seamless stainless steel outlet fitted with patented EPDM sealing ring (Thaler Super-Seal). The Super-Seal provides a superior seal in the event drains or pipes become clogged.

Prominent Features: Easy installation for retrofit applications requiring new hook-up (see Recommended Use).

Leader Diameters: With Super-Seal EPDM Sealing Ring: 1-3/4" to 5-3/4" (44 mm to 146 mm).

Options: EPDM Super-Seal on outlet (see Thaler Super-Seal Retrofit Drain Seal literature). Suitable for PVC, cast iron, steel, copper, or other type leaders in both Schedule 40 or 80 leader thicknesses. Bolted drain body (see RD-19-SS-SS-BDB on reverse side of page).

RECOMMENDED USE

For traffic bearing or landscaped roofs employing an inverted (protected) membrane e.g. promenade, podium or plaza deck roofs or roof gardens.

APPROVALS

Conforms to ANSI A112.21.2 Roof Drains standard.

WARRANTY

20 year warranty against defects in materials and/or manufacture when installed in accordance with Thaler "Installation Instructions". Copy of Warranty Certificate available upon request.

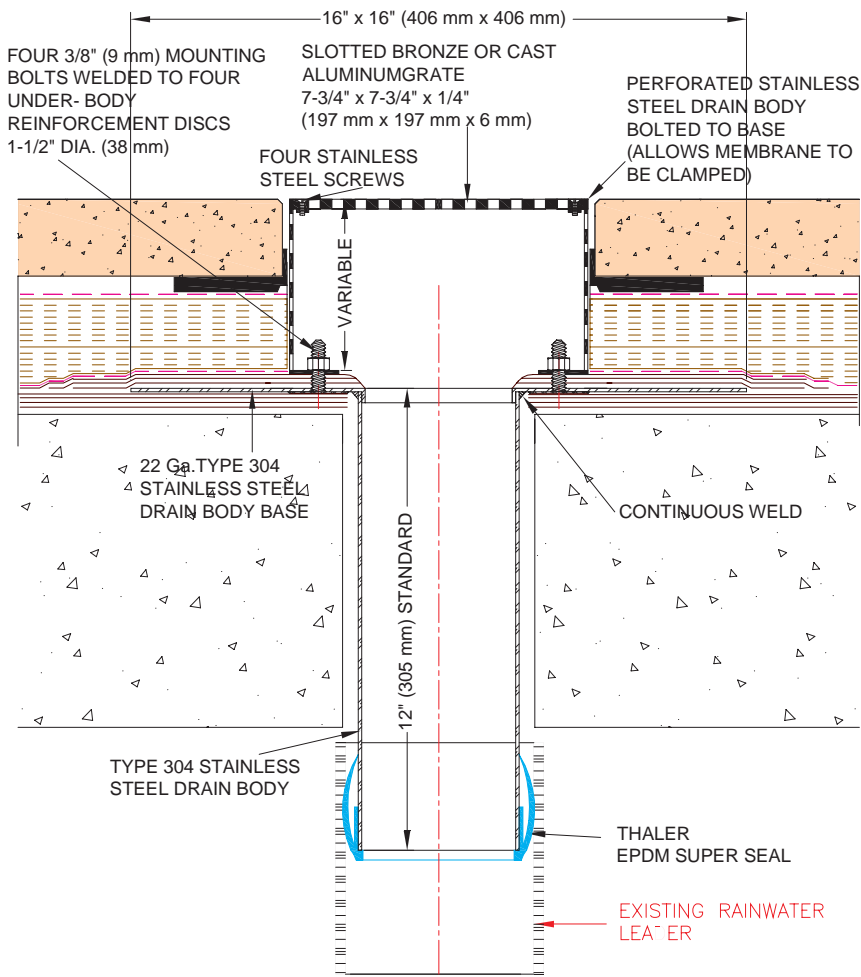
MAINTENANCE

No maintenance required (maintenance free), however, as per CRCA/NRCA recommendations, drains should be inspected twice a year (spring and fall) and any debris removed from both around and inside the strainer.

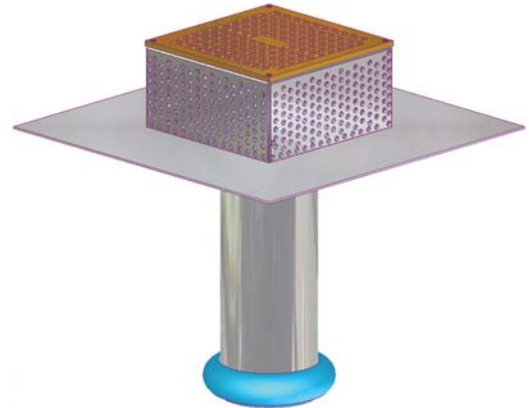
SPECIFICATION (Short Form)

Roof drains: Thaler RD-19-SS-RR retrofit roof drain for inverted roofs, for [1-3/4" (44 mm) to 5-3/4" (146 mm)] leader size; with: 7-3/4" (197 mm) removable, square, slotted [bronze][cast aluminum] grate; 22 Ga. (0.8 mm) Type 304 stainless steel drain body, 7-3/4" (197 mm) square x [specified height] with 1/4" (6 mm) or larger perforations in drain body; deck flange; stainless steel straight outlet with Super-Seal EPDM sealing ring; [PVC coated deck flange] [bituminous painted deck flange]; manufactured by Thaler Metal Industries, 1-800-387-7217 (Mississauga, Ontario, Canada) or 1-800-576-1200 (New Braunfels, TX), installed as per manufacturer's written instructions. Provide standard 20 year warranty against defects in materials and/or manufacture.

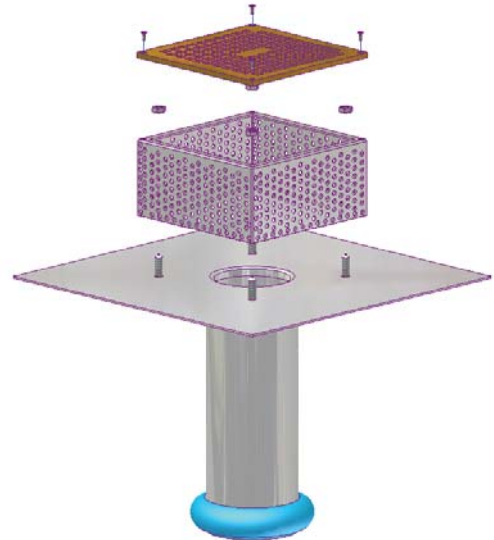
Continued at left and on reverse



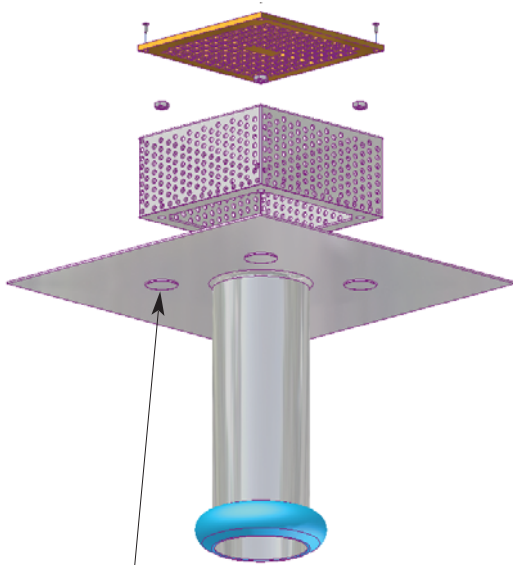
RD-19-SS-RR-BDB (Bolted Drain Body) ROOF DRAIN (OPTIONAL)



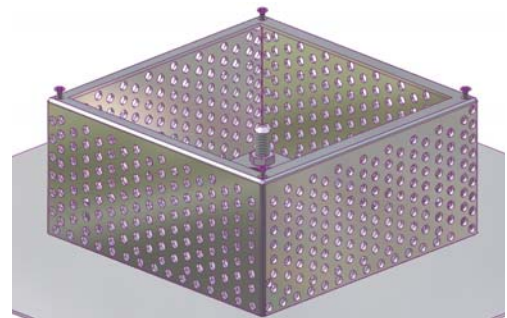
RD-19-SS-RR-BDB



Exploded View Showing Mounting Bolts Welded to Reinforcement Discs



Exploded View Showing Under-Body Reinforcement Discs



View Showing Drain Body Bolted to Base For Clamping Membrane