

ROOF SPECIALTIES RD-1C VANDALPROOF COPPER ROOF DRAIN (All Purpose, Expansion Outlet)

DESCRIPTION

The Thaler RD-1C Roof Drain consists of a vandalproof cast aluminum dome strainer with hinged access gate, cast bronze stabilizer ring, stainless steel mounting bolts, flat, pan-formed copper drain body and expansion outlet (with copper ferrule), copper deck flange, and cast aluminum under-deck clamping ring.

Prominent Features: Non-removable dome strainer eliminates improper strainer installation or lost strainers that can result in plugged drains. Vandalproof hinged access gate (allen-key opening) allows drain to be cleaned if necessary, or dismantled by permitting access to bolts inside drain. Expansion outlet prevents damage or distortion to drain caused by horizontal and vertical movement and/or elongation of rainwater leaders.

Leader Diameters: Suitable for 3", 4" or 6" (76 mm, 102 mm or 152 mm) leader sizes.

Options: T-5 copper sediment collar. T-7 aluminum air copper Flow Control accessory (weir) for utilizing roof as temporary reservoir during excessive rainfall. T-12 stainless steel ballast guard. PVC coated deck flange for PVC roof membrane. Bituminous painted deck flange for BUR and ModBit roof membrane.

RECOMMENDED USE

All purpose drain for flat roofs in new construction employing conventional roof membrane applications (without ballast guard) or inverted roof membrane applications (with ballast guard). Suitable for PVC, cast iron, steel, copper, or other type leaders.

APPROVALS

Conforms to ANSI A112.21.2 Roof Drains standard.

WARRANTY

20 year warranty against defects in materials and/or manufacture when installed in accordance with Thaler "Installation Instructions". Copy of Warranty Certificate available upon request.

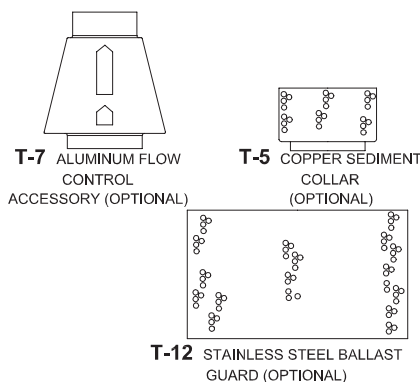
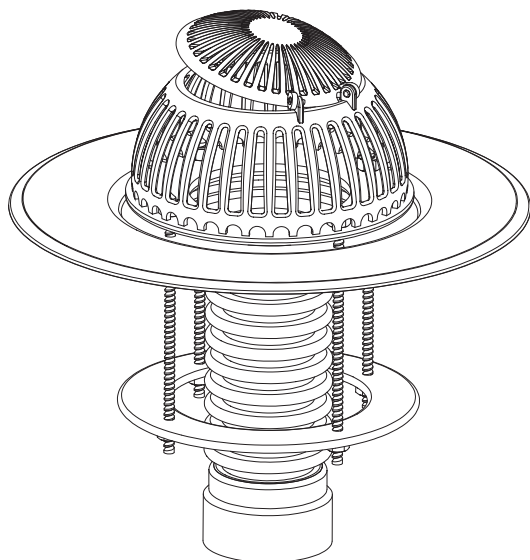
MAINTENANCE

No maintenance required (maintenance free), however, as per CRCA/NRCA recommendations, drains should be inspected twice a year (spring and fall) and any debris removed from both around and inside the strainer.

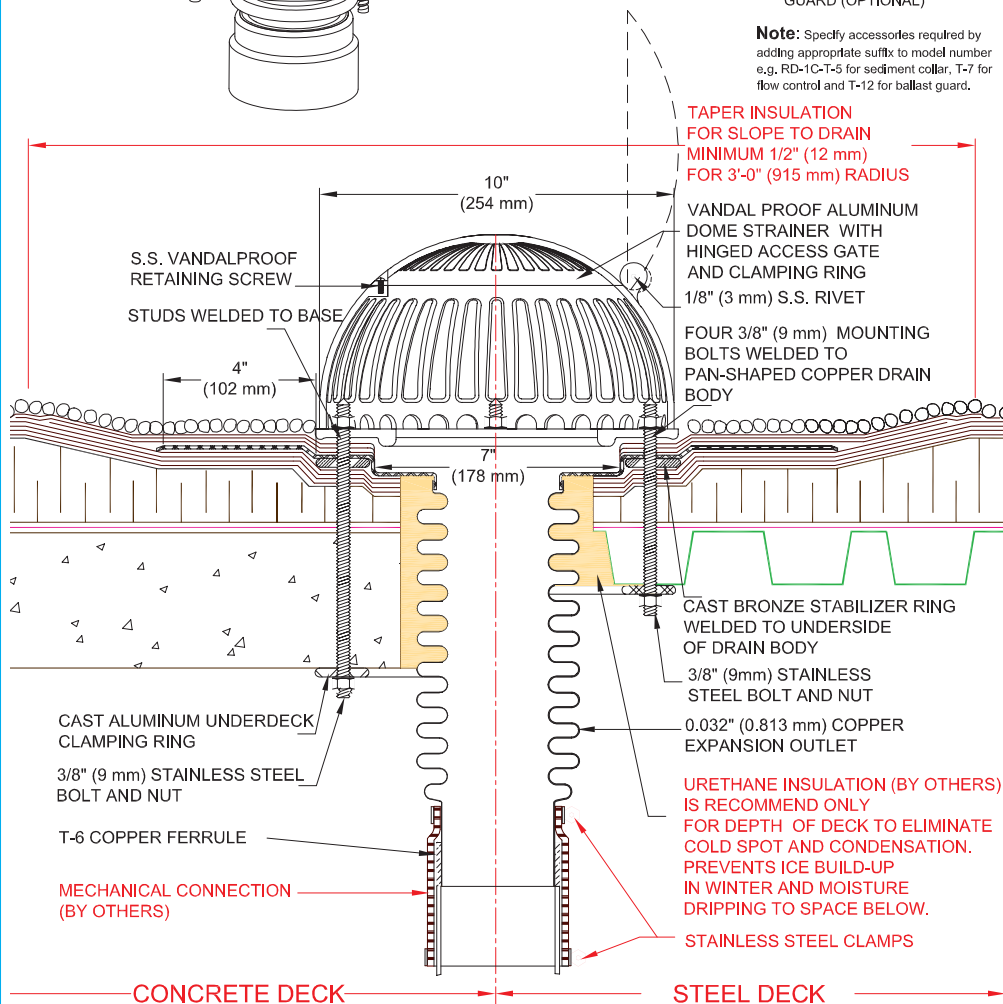
SPECIFICATION (Short Form)

Roof drains: Thaler RD-1C drain for [3" (76 mm)] [4" (102 mm)] [6" (152 mm)] leader size; with: vandalproof cast aluminum dome with hinged access gate clamped directly to drain body; 24 oz. .032" (0.813 mm) spun copper pan-formed drain body, deck flange and expansion outlet with: copper ferrule; 3/8" (9 mm) s.s. bolts welded to drain body; bronze stabilizer ring; cast aluminum under-deck clamping ring; [T-5 copper sediment collar;] [perforated 22 ga. (0.76 mm) s.s. ballast guard;] [T-7 aluminum flow control accessory;] [PVC coated deck flange] [bituminous painted deck flange]; manufactured by Thaler Metal Industries, 1-800-387-7217 (Mississauga, Ontario, Canada) or 1-800-576-1200 (New Braunfels, TX), installed as per manufacturer's written instructions. Provide standard 20 year warranty against defects in materials and/or manufacture.

See Reverse Side of Page For Optional
Accessories and 3-D Illustrations



Note: Specify accessories required by adding appropriate suffix to model number e.g. RD-1C-T-5 for sediment collar, T-7 for flow control and T-12 for ballast guard.



RD-1C VANDAL PROOF COPPER ROOF DRAIN (All Purpose, Expansion Outlet)

INSTALLATION

"Installation Instructions" are provided with every Thaler product. Essentially, the RD-1C roof drain is installed by fitting and connecting the drain outlet into the rainwater leader, installing the dome strainer (including any optional accessories), and as follows:

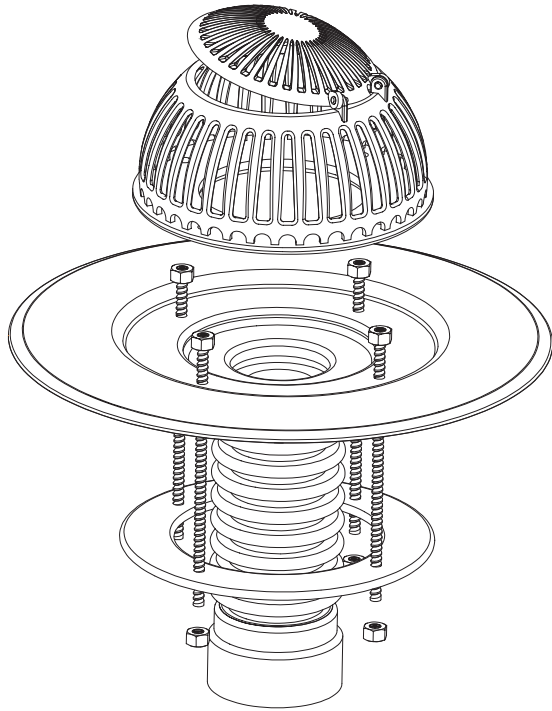
BUR: Set drain flange over membrane in layer of plastic cement and flash in with 3 overlapping layers of felt flashing.

ModBit: Torch membrane until bitumen is fluid and set drain flange into fluid. Flash in flange with two overlapping layers of ModBit and seal with asphalt sealer.

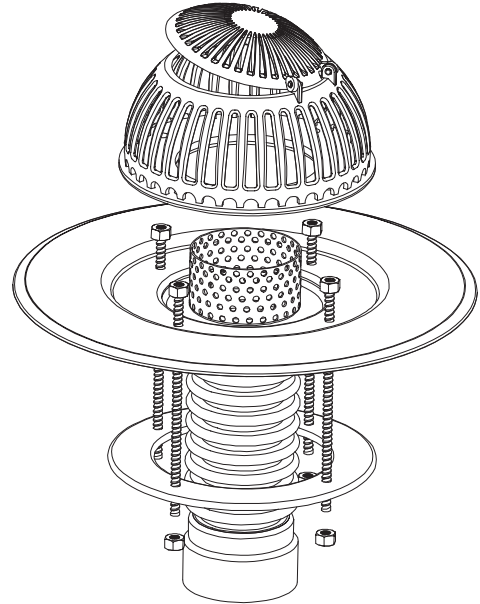
Single Ply: Set drain flange in layer of membrane adhesive before applying membrane over flange. Note: for PVC membrane, specify PVC coated drain flange by adding suffix P to end of model number, e.g. RD-1C-P; weld roofing to drain flange using PVC torch.

Precautions: If coating drain flange with a bituminous paint on site, allow 24 hours for drying before applying roof membrane.

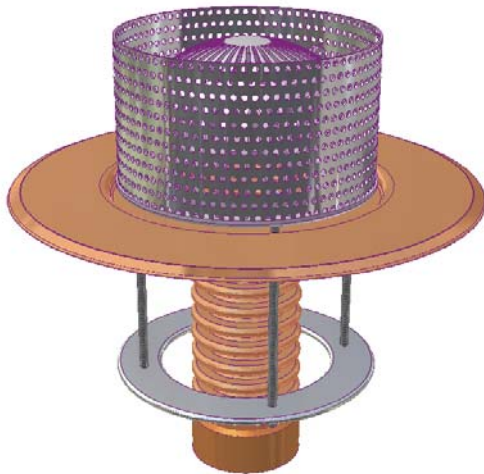
Ordering: Specify accessories required by adding appropriate suffix to model number e.g. RD-1C-T-5 for sediment collar, T-7 for flow control and T-12 for ballast guard. Available throughout North America. Contact Thaler for list of distributors and current cost information. Most products are readily available from stock.



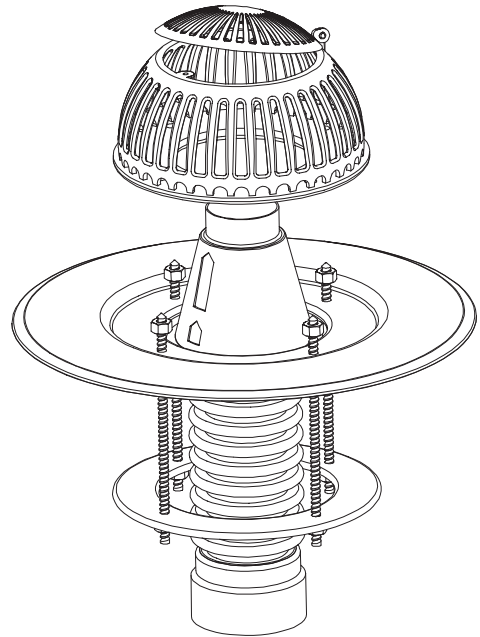
EXPLODED VIEW



**Optional RD-1C With T-5 Copper Sediment Collar
(Shown Friction Fitted To Drain Body)**



**Optional RD-1C With T-12 Stainless Steel Ballast Guard
(Shown Friction Fitted To Dome Strainer)**



**Optional RD-1C With T-7 Flow Control Accessory
(Shown Friction Fitted To Drain Body)**