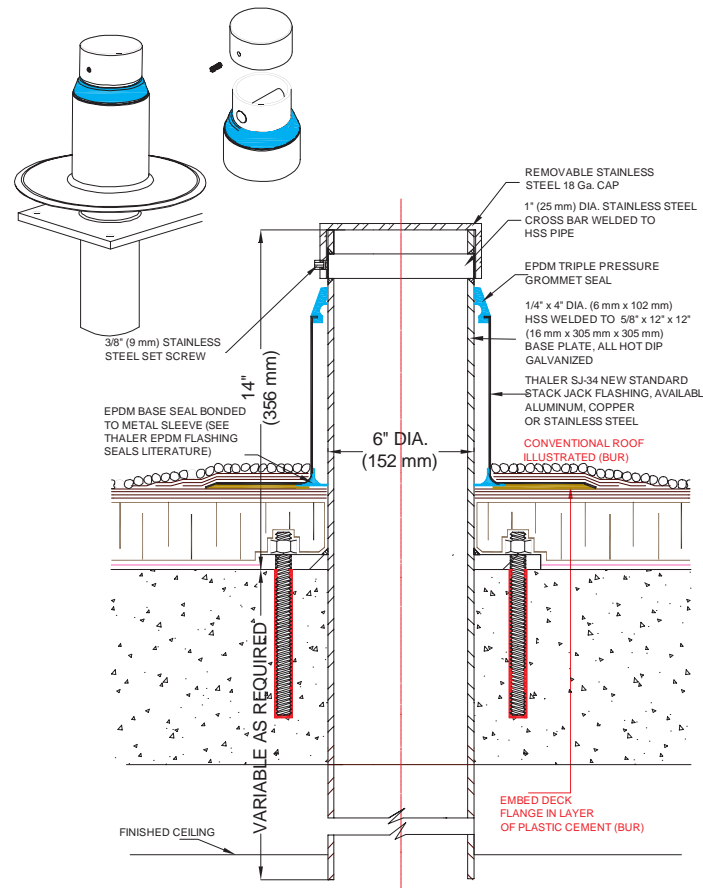
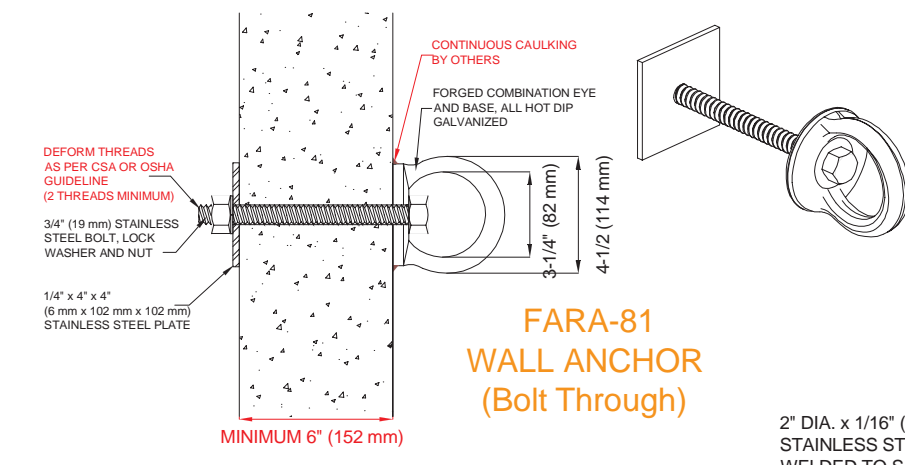


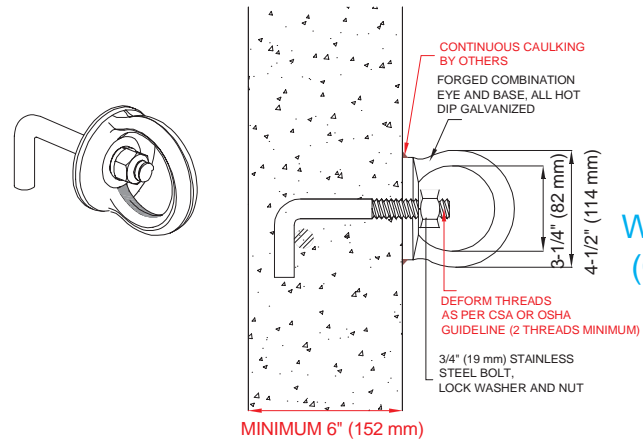
FARA-1 FALL ARREST ROOF ANCHOR (Bolt Through)



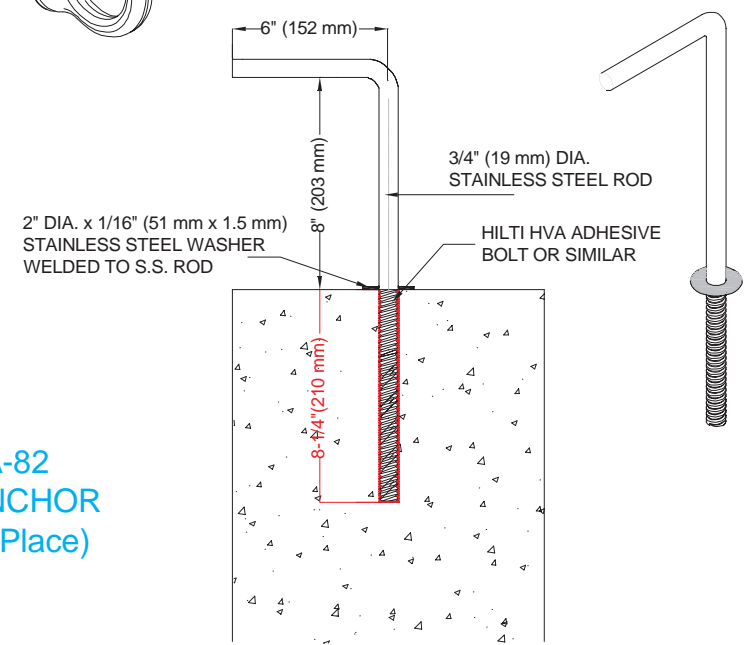
FARA-180 "ROPE DROP" ANCHOR



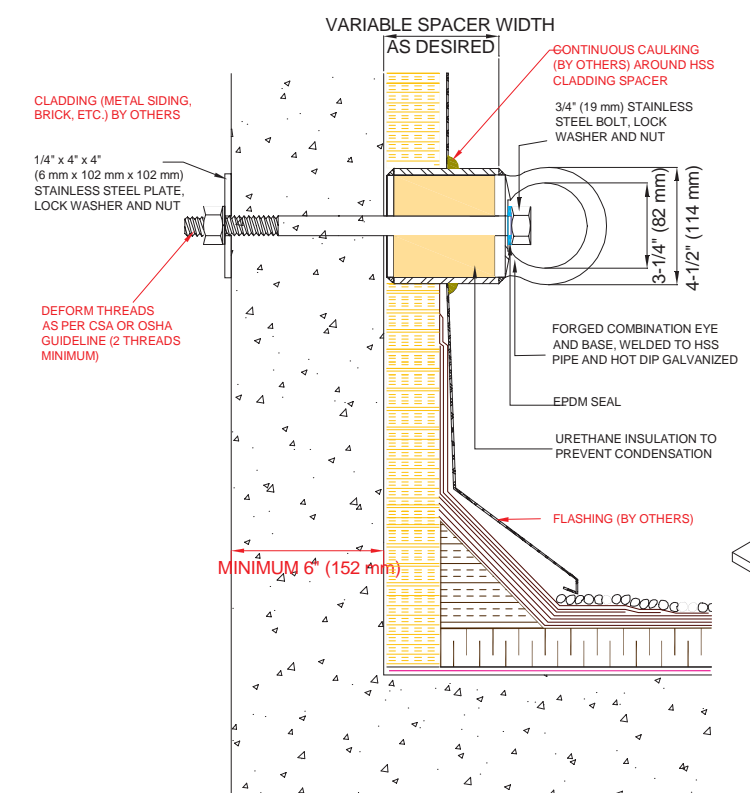
FARA-81 WALL ANCHOR (Bolt Through)



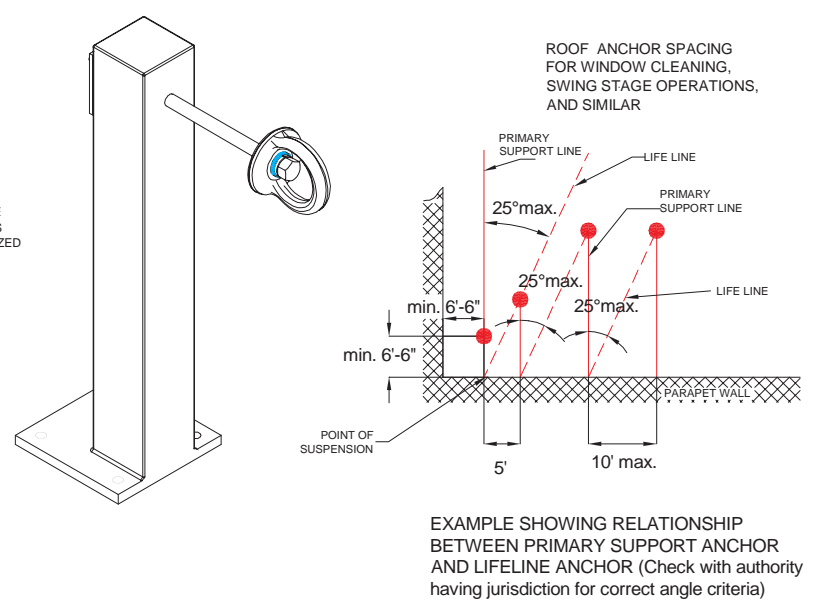
FARA-82 WALL ANCHOR (Cast-In-Place)



FARA-110 "ROPE STOP" ANCHOR



FARA-84 WALL ANCHOR (Bolt Through)



EXAMPLE SHOWING RELATIONSHIP BETWEEN PRIMARY SUPPORT ANCHOR AND LIFELINE ANCHOR (Check with authority having jurisdiction for correct angle criteria)

INSTRUCTIONS FOR USAGE:

For anchors test results refer to Log Book.

APPLY only ONE load to each anchor at the time (life line, tie back or support line).

ALWAYS use TWO independent means of support (support line and life line).

REPORT all unsafe conditions encountered. DO NOT use damaged or unsafe anchors.

READ Log Book before using anchors.

USE anchors only for anchorage. Do not produce shock loads.

THIS diagram forms part of, and is valid only with, the associated anchor test reports.

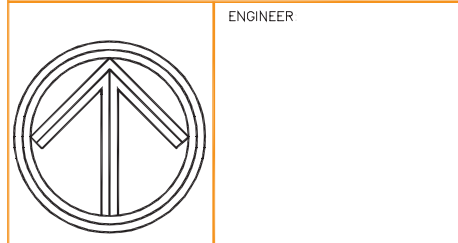
RIGGING is the responsibility of the users of the anchors system. The window cleaning contractor shall provide a written work plan showing how support lines and life lines are to be attached to the anchors.

- FARA-1
- FARA-180
- ▲ FARA-82
- ▲ FARA-84
- FARA-110
- ▲ FARA-81

THIS DRAWING, ANY RELATED DOCUMENTS AND RELATED INFORMATION ARE THE PROPERTY OF THALER METAL INDUSTRIES LTD. THEY MAY ONLY BE USED FOR THE SPECIFIC PURPOSE FOR WHICH THEY HAVE BEEN PROVIDED. NO REPRODUCTION, DUPLICATION OR DISCLOSURE OF THE DRAWING, DOCUMENTS AND INFORMATION IS PERMITTED WITHOUT THE PRIOR CONSENT OF THALER METAL INDUSTRIES LTD.

--- life line
 --- Primary suspension line or equipment tie-back line

Only ONE line shall be attached to any given anchor. Lifeline, suspension line and tie back lines SHALL NOT be fastened simultaneously to the same anchor.



THALER Metal USA Inc.
 1902 Common St. Suite 500
 New Braunfels, TX, 78130
 TEL: 830-626-6001
 FAX: 830-626-6010

THALER Metal Industries Ltd.
 26 11 Drew Road,
 Mississauga, ON, L4T 1G1
 TEL: 905-677-1520
 FAX: 905-677-1503

PROJECT: **SAMPLE ROOF ANCHOR LAYOUT (Section Details)**

DATE	SCALE
RAWN	CHECKED
FILE #	SHEET