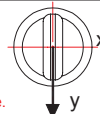


ROOF SPECIALTIES

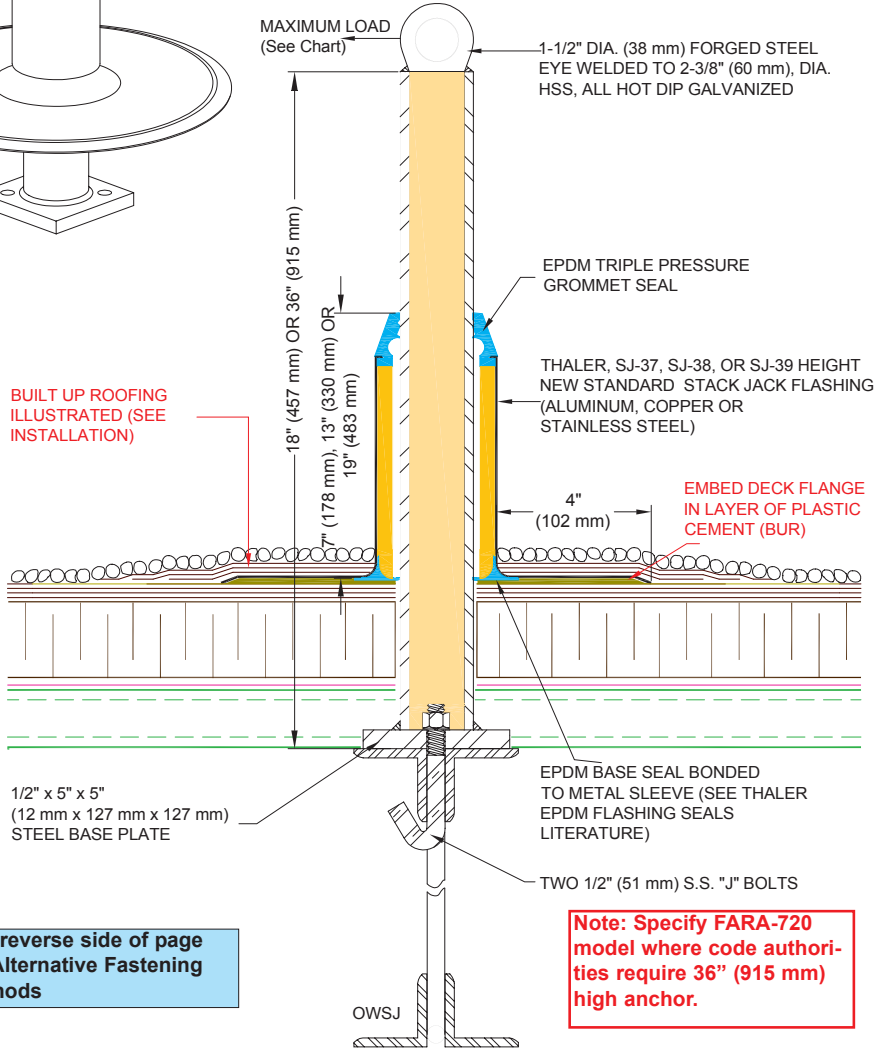
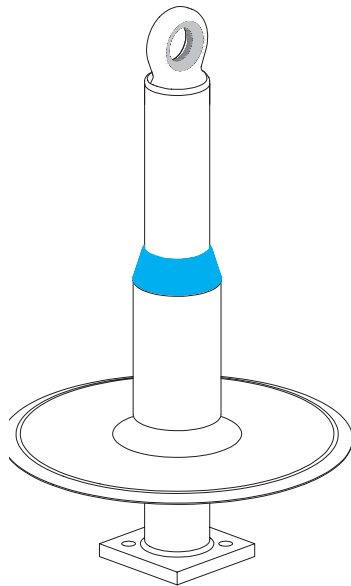
**FARA-710/-720 TRAVEL RESTRAINT ROOF ANCHORS**

Anchor Type	Height	Base Thickness	Maximum Load	Deflection Under Load	Deflection Residual
FARA-710	18" (457 mm)	1/2" (12 mm)	1500 lbs (6.7 kN)	0.290" (7.36 mm)	0.006" (0.15 mm)
FARA-720	36" (915 mm)	5/8" (16 mm)	1500 lbs (6.7 kN)	1.864" (47 mm)	0.227" (5.7 mm)

Note: Anchors are designed to resist without fracture and/or pull-out a force of 1500 lbs (6.7 kN), applied in the most adverse direction (x). All testing reports available upon request.



Load Direction Parallel to the Eye.



See reverse side of page for Alternative Fastening Methods

Note: Specify FARA-720 model where code authorities require 36" (915 mm) high anchor.

**FARA-710/-720 TRAVEL RESTRAINT ROOF ANCHORS**

PATENTED

**INSTALLATION**

"Installation Instructions" are provided with every Thaler product. Essentially, Thaler FARA-710/-720 travel restraint anchors are installed by bolting the anchor to the top chord of the OWSJ as per layout drawings, using a maximum torque of 75 lbf (100 Nm), then placing the flashing sleeve over the anchor and roof membrane, and as follows:

- BUR:** Set flashing deck flange in layer of plastic cement and flash in with 3 overlapping layers of felt flashing.
- ModBit:** Torch membrane until bitumen is fluid and set flashing flange into fluid. Flash in flange with two overlapping layers of ModBit and seal with asphalt sealer. Do not overheat (melt) EPDM base seal.
- Single Ply:** Set deck flange in layer of membrane adhesive and extend single ply up sleeve to highest elevation possible and clamp membrane to STACK JACK Flashing. Note: for PVC membrane, specify PVC coated STACK JACK by adding suffix P to end of model number, e.g. FARA-710-A-P; weld roofing to deck flange using PVC torch.
- Precautions:** Apply an asphaltic or other type protective coating to exposed aluminum STACK JACK Flashing to a height of 2" (51 mm) above a limestone ballast to avoid corrosive reaction. Also, if coating deck flange with bituminous paint on site, allow 24 hours for drying before applying roof membrane.
- Ordering:** Specify flashing material required by adding the appropriate suffix to model number e.g. FARA-710-A, for aluminum, etc. Available throughout North America. Contact Thaler for list of distributors and current cost information. Most products are readily available from stock.

**DESCRIPTION**

Thaler FARA-710 (low model) and FARA-720 (high model) Travel Restraint Anchors consist of a urethane insulated, galvanized hollow steel post (HSS) welded to a mounting plate for securing to a structural roof deck, and an aluminum, copper or stainless steel flashing sleeve. The anchors are rated for a maximum applied force of 1500 lbs (6.7 kN). The top of the anchor is fitted with a very high strength, galvanized forged eye. Anchors are spaced maximum 30'-0" (9.1 m) on centers. A horizontal rope or cable is passed through the eyes and secured at terminal ends. Workers then hook their fall arrest lanyard onto the horizontal line. Travel restraint anchors are typically located minimum 6'-0" (2 m) back from the roof edge wherever there is a fall hazard e.g. low parapet or eaves, etc.

**Prominent Features:** Condensation free and maintenance free. Anchor integrity is backed by \$7,000,000.00 liability insurance.

**Options:** PVC coated flashing deck flange for PVC roof membrane. Bituminous painted flashing deck flange for BUR and ModBit roof membrane. Other securements (see Fastening Methods at left).

**RECOMMENDED USE**

Suitable for all flat roofs for securing workers' fall arrest lanyard thereby limiting their movement when working near a vertical drop e.g. roof eaves or low parapet. Specify high model when required by code. These anchors are not to be used to secure vertical lifelines and suspension lines.

**APPLICABLE STANDARDS**

Thaler FARA anchors conform to all Canadian and U.S. standards, provincial and state labour/safety codes and materials standards relating to anchor fabrication, window cleaning and other suspended maintenance operations. Conformance includes CSA, OML, ASME, ANSI, IWCA, OSHA, CAL, OSHA, AISC, AWS, and other references. Thaler SJ-37 New-Standard STACK JACK Flashing conforms to CSA B272-93. See separate Thaler FARA Systems Fall Protection literature for specific data.

**WARRANTY**

20 year warranty against **leaks, condensation and defects** in materials and/or manufacture when installed in accordance with Thaler "Installation Instructions". Copy of Warranty Certificate available upon request.

**MAINTENANCE**

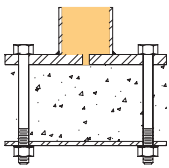
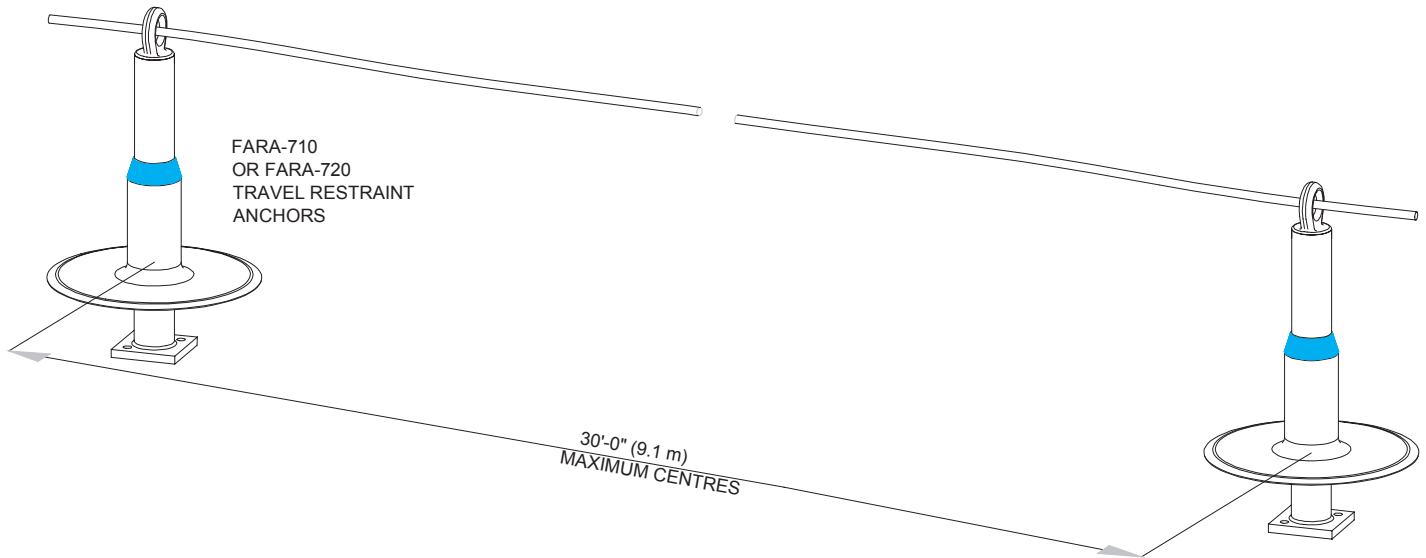
Regulatory authorities require anchors to be inspected annually with inspection data (date, inspector's name and comments) recorded in the Fall Protection Maintenance Log Book for Window Cleaning and/or Other Suspended Access Maintenance Operations (including travel restraint). Apart from this requirement, Thaler anchors require no maintenance (maintenance free).

**PLANNING SERVICE**

Thaler will provide layout drawings for anchors in compliance with all applicable standards, safety regulations and local building codes. A nominal, low-cost fee is charged for this service (refunded if Thaler secures the contract to supply the anchors).

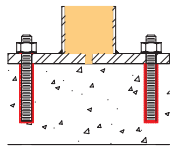
**SPECIFICATION (Short Form)**

**Travel restraint roof anchors:** Thaler [FARA-710] [FARA-720] anchors including appropriate mounting hardware for fastening to structural roof deck; to [CSA 291-02] [OSHA 1910.66, Sub parts D and F] with: galvanized forged 1018 steel eye; urethane insulated, hollow, hot dipped galvanized ASTM 500C steel post section (HSS) 1/4" (6 mm) wall thickness x 2-3/8" (60 mm) dia. x [18" (457 mm)] [36" (915 mm)] high welded to 44W base plate: [SJ-37, 7" (178 mm) high] New-Standard STACK JACK flashing of [.064" (1.6 mm) mill finish 1100-OT alloy aluminum] [.032" (0.853 mm) 24 oz. copper] [.031" (0.79 mm) 22 ga. Type 304 stainless steel] to CSA B272-93, with EPDM Triple Pressure Grommet Seal and EPDM Base Seal and [PVC coated deck flange] [bituminous painted deck flange]; manufactured by Thaler Metal Industries, 1-800-387-7217 (Mississauga, Ontario, Canada) or 1-800-576-1200 (New Braunfels, TX), installed as per manufacturer's written instructions. Provide 20 year warranty against defects in materials and/or manufacture.



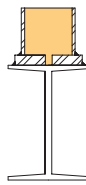
**T1**

Bolt Through Slab



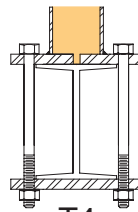
**T2**

Adhesive Bolts



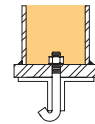
**T3**

Weldable



**T4**

Bolt Around Beam



**T5**

OWSJ J Bolt

Specify fastening method required by adding the appropriate suffix to model number e.g. FARA-710-T5

### ALTERNATIVE FASTENING METHODS