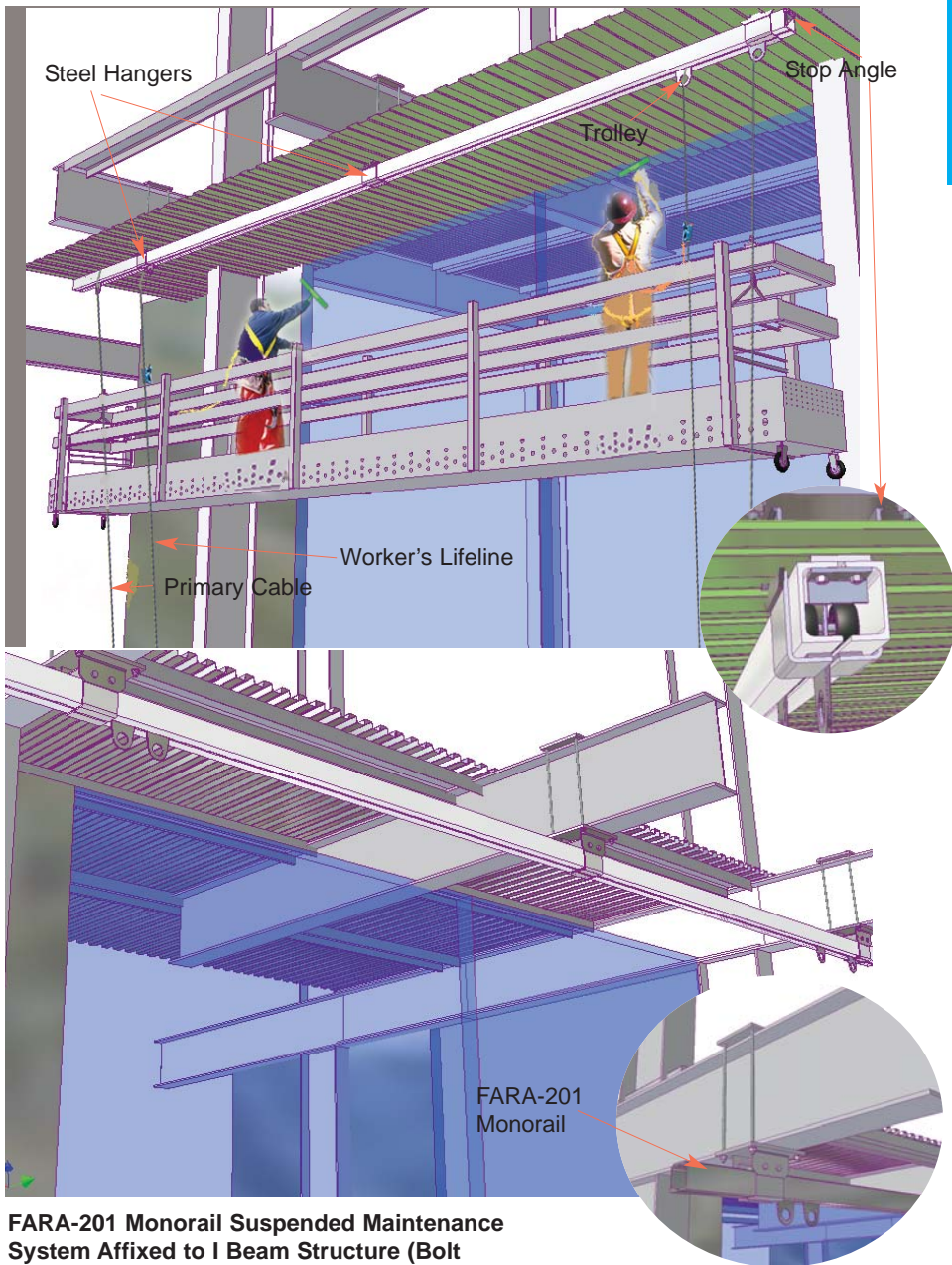
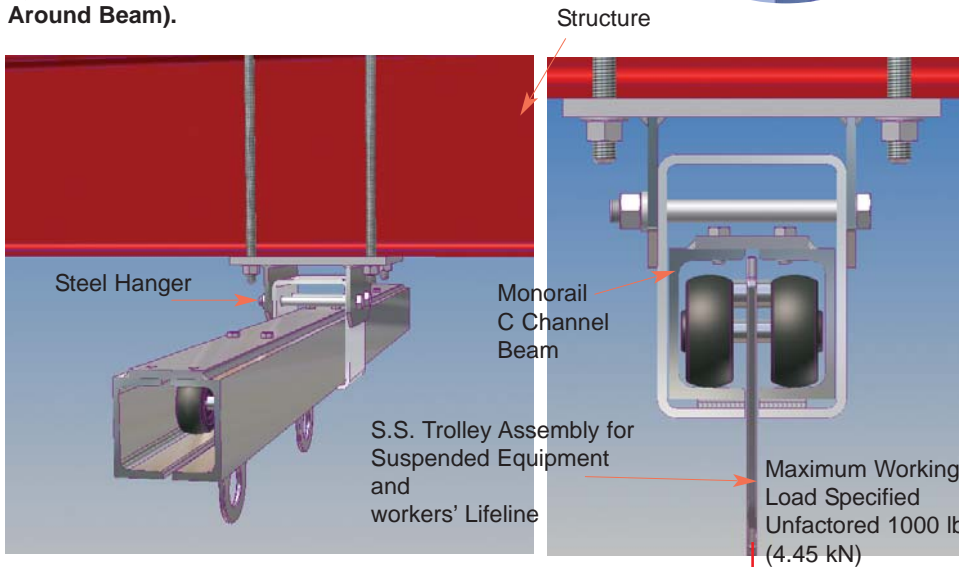


ROOF SPECIALTIES

**FARA-201 MONORAIL
SUSPENDED ACCESS
MAINTENANCE SYSTEM
(Bolt Around Beam)**



FARA-201 Monorail Suspended Maintenance System Affixed to I Beam Structure (Bolt Around Beam).



Trolley With Stainless Steel Eye Mounted Onto I-Beam Structure

Section Through Monorail

FARA-201 MONORAIL SUSPENDED MAINTENANCE SYSTEM

DESCRIPTION

The Thaler FARA-201 Monorail consists of an aluminum section C-channel beam carrier with end stop angle, galvanized plates, connector plates, and monorail holder, stainless steel bolts, washers and nuts, trolleys with s.s. eyes (for safety lifeline and primary cable). Workers move along the monorail by pulling themselves forward or backward manually.

Prominent Features: Maintenance free. Structural integrity is backed by high \$7,000,000.00 liability insurance.

Options: For more aesthetic applications, see Concealed Trolley system, page I-31. Other methods of securing to main structure.

RECOMMENDED USE

Suitable for all applications for suspending a platform or single point access equipment such as baskets (cages) and manually or power operated boatswain chairs, for window cleaning or other exterior/interior building maintenance.

APPLICABLE STANDARDS

Thaler Monorail System conforms to all Canadian and U.S. standards, Provincial and State labour/safety codes and materials standards relating to anchor fabrication, window cleaning and other suspended maintenance operations. Conformance includes CSA, OML, ASME, ANSI, IWCA, OSHA, CAL OSHA, AISC, AWS, and other references.

WARRANTY

20 year warranty against defects in materials and/or manufacture when installed in accordance with Thaler "Installation Instructions". Copy of Warranty Certificate available upon request.

MAINTENANCE

Regulatory authorities require the monorail system be inspected annually with inspection data (date, inspector's name and comments) recorded in the Fall Protection Maintenance Log Book for Window Cleaning and/or Other Suspended Access Maintenance Operations. Apart from this requirement, Thaler Monorail Suspended Maintenance System requires no maintenance (maintenance free).

PLANNING SERVICE

Without obligation, Thaler will provide layout drawings for monorail systems in compliance with all applicable standards, safety regulations and local building codes.

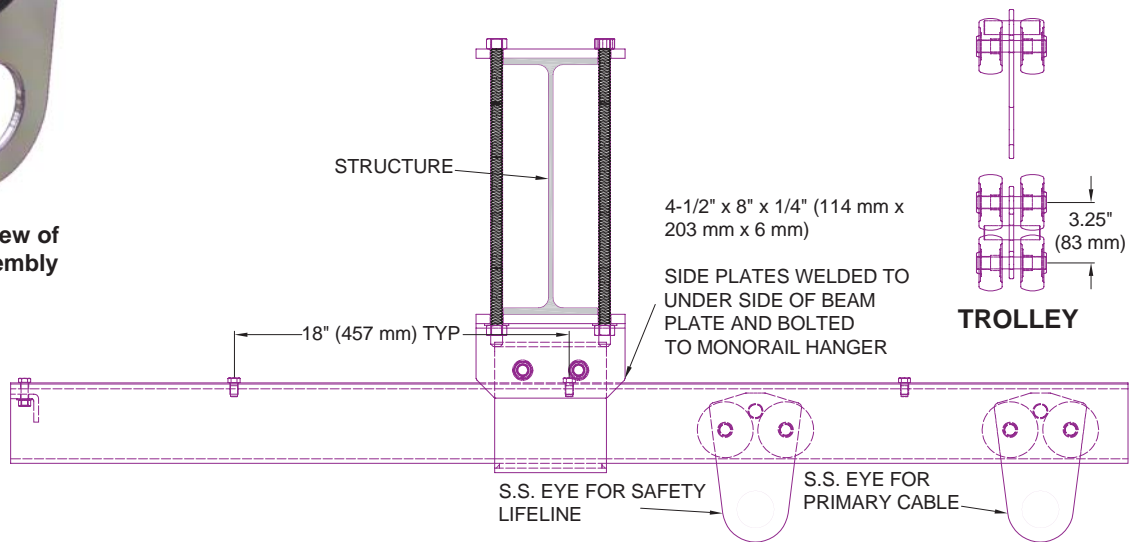
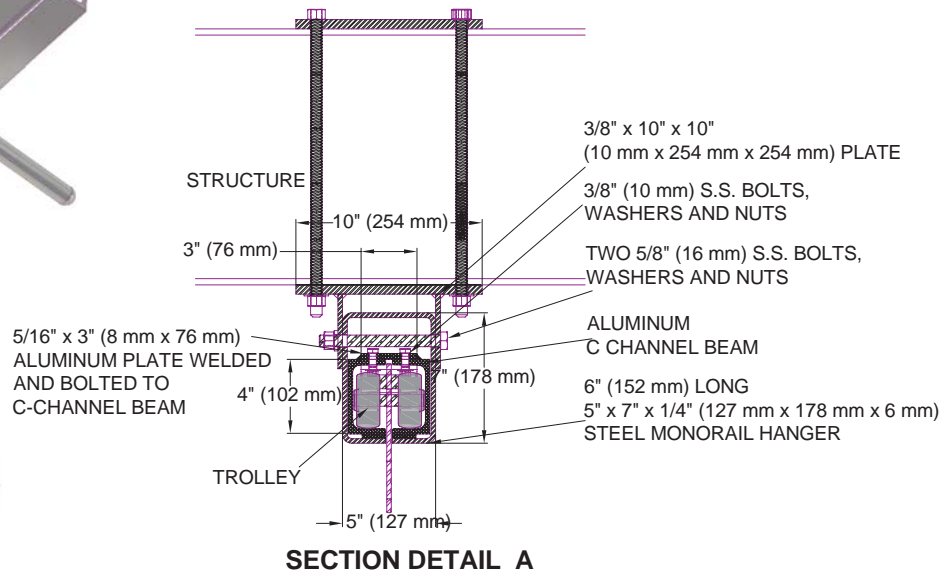
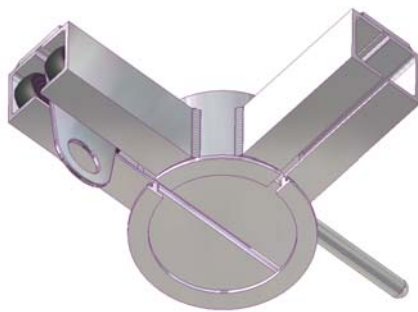
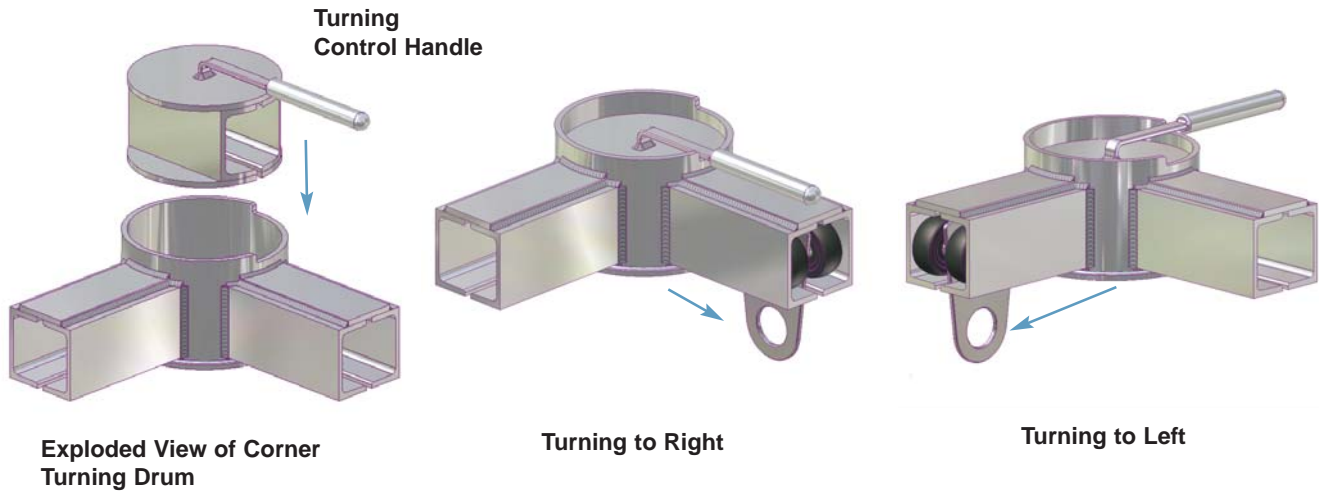
SPECIFICATION (Short Form)

Monorail Suspended Maintenance System: Thaler FARA-201 Monorail Suspended Maintenance System to [CSA Z91-02] [OSHA 1910.66, Sub parts D and F] with T-6061 aluminum C channel beam to suit main structure; 1/4" x 5" x 7" (12 mm x 127 mm x 178 mm) galvanized hanger welded to 3/8" x 10" x 10" (10 mm x 254 mm x 254 mm) underbeam plate for bolting to main I-beam structure; 10" (254 mm) wide steel upper plate; s.s. hanger bolts, washers and nuts of sizes shown on drawings; trolleys with s.s. eyes; manufactured by Thaler Metal Industries, 1-800-387-7217 (Mississauga, Ontario, Canada) or 1-800-576-1200 (New Braunfels, TX), installed as per manufacturer's written instructions. Provide 20 year warranty against leaks, condensation and defects in materials and/or manufacture.

INSTALLATION

"Installation Instructions" are provided with every Thaler product. Essentially, the Thaler FARA-201 Monorail Suspended Maintenance System is installed by bolting C channel-beam to main structure using bolted hangers and then installing the trolleys.

Ordering: Available throughout North America. Contact Thaler for list of distributors and current cost information. Most products are readily available from stock.



FARA-201 MONORAIL SUSPENDED MAINTENANCE SYSTEM