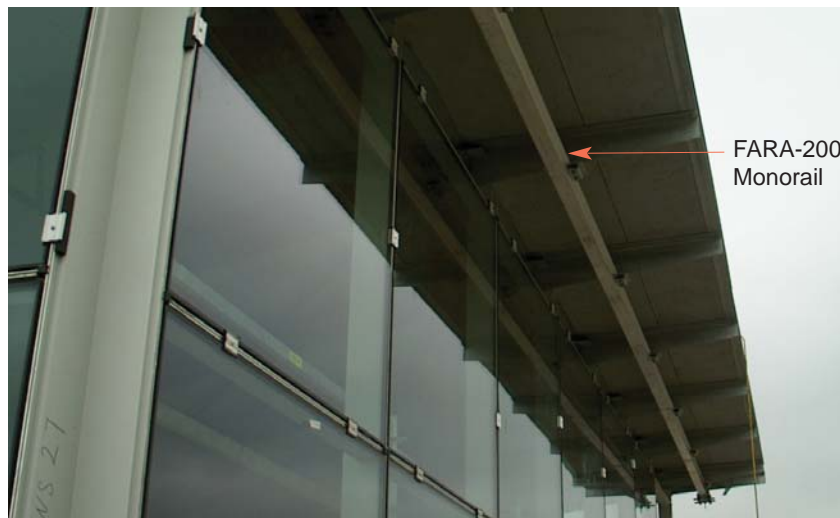
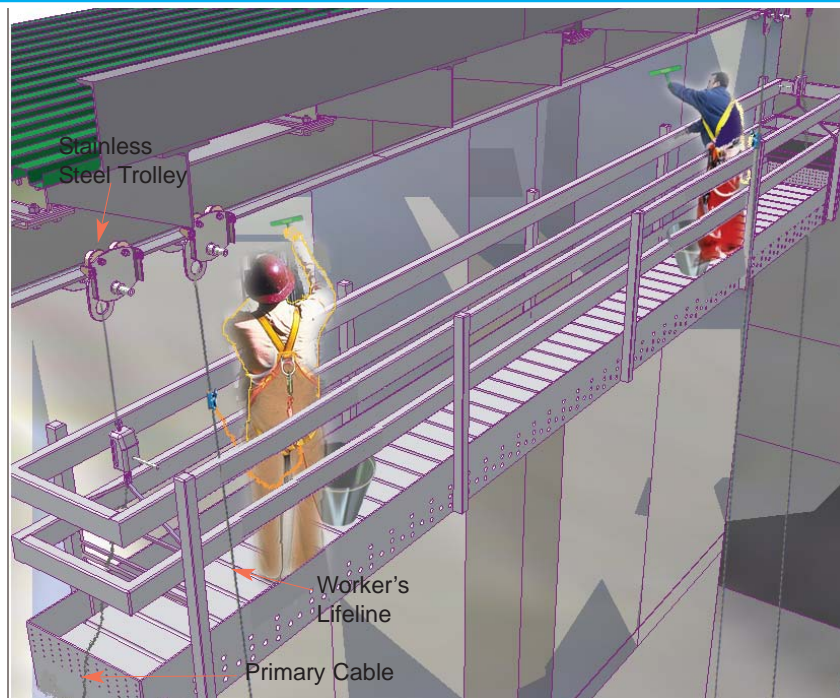
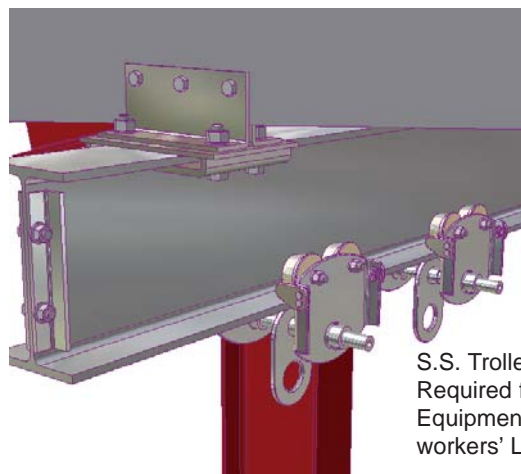


ROOF SPECIALTIES

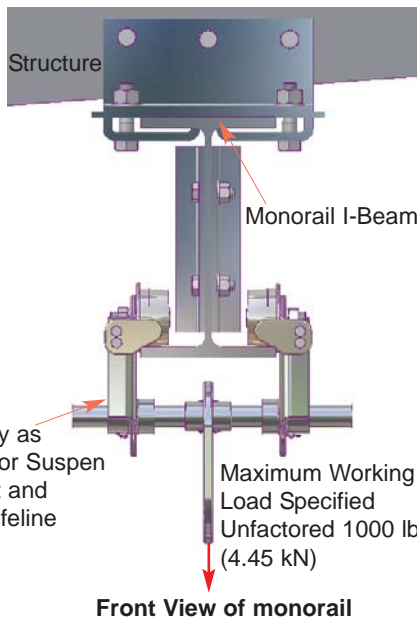
FARA-200 MONORAIL SUSPENDED ACCESS MAINTENANCE SYSTEM (Exposed I Beam)



Window Wall Showing FARA-200 Monorail Suspended Maintenance System Affixed to Soffit Structure.



Stainless Steel Trolley With Stainless Steel Eye Mounted Onto I-Beam



Front View of monorail

FARA-200 MONORAIL SUSPENDED MAINTENANCE SYSTEM

DESCRIPTION

The Thaler FARA-200 Monorail consists of an aluminum section I-beam carrier with end stop angles, galvanized clamps, angles for attaching to structure, galvanized connector plate, stainless steel bolts, washers and nuts, and stainless steel trolleys with s.s. eyes (for safety lifeline and primary cable). Workers move along the monorail by pulling themselves forward or backward manually.

Prominent Features: Maintenance free. Structural integrity is backed by high \$7,000,000.00 liability insurance.

Options: For more aesthetic applications see Concealed Trolley system, page I-32.

RECOMMENDED USE

Suitable for all applications for suspending a platform or single point access equipment such as baskets (cages) and manually or power operated boatswain chairs, for window cleaning or other exterior/interior building maintenance.

APPLICABLE STANDARDS

Thaler Monorail System conforms to all Canadian and U.S. standards, Provincial and State labour/safety codes and materials standards relating to anchor fabrication, window cleaning and other suspended maintenance operations. Conformance includes CSA, OML, ASME, ANSI, IWCA, OSHA, CAL OSHA, AISC, AWS, and other references.

WARRANTY

20 year warranty against defects in materials and/or manufacture when installed in accordance with Thaler "Installation Instructions". Copy of Warranty Certificate available upon request.

MAINTENANCE

Regulatory authorities require the monorail system be inspected annually with inspection data (date, inspector's name and comments) recorded in the Fall Protection Maintenance Log Book for Window Cleaning and/or Other Suspended Access Maintenance Operations. Apart from this requirement, Thaler Monorail Suspended Maintenance System requires no maintenance (maintenance free).

PLANNING SERVICE

Without obligation, Thaler will provide layout drawings for monorail systems in compliance with all applicable standards, safety regulations and local building codes.

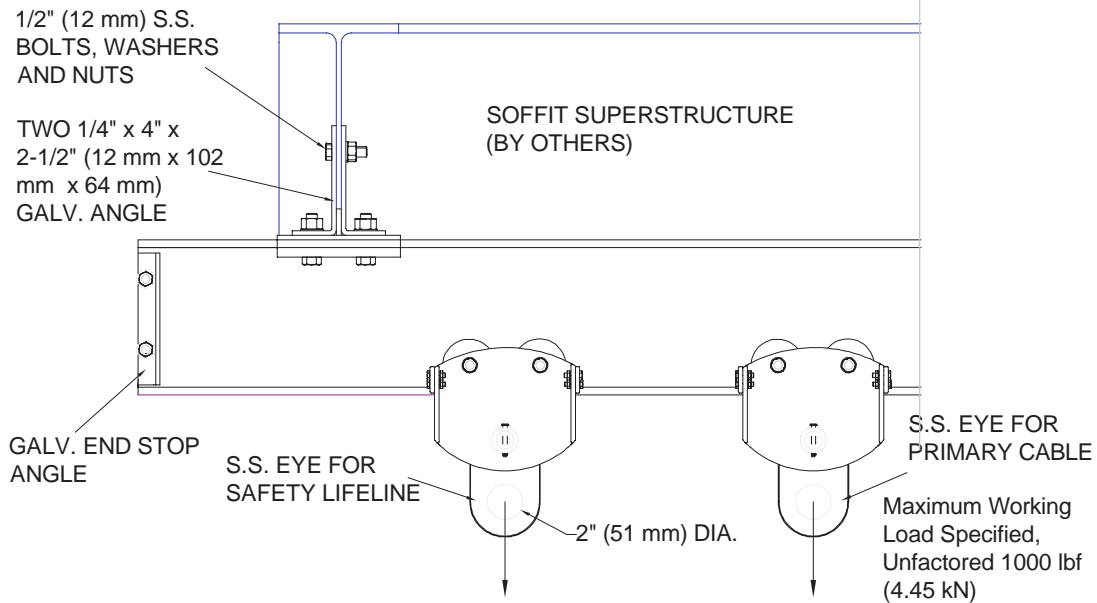
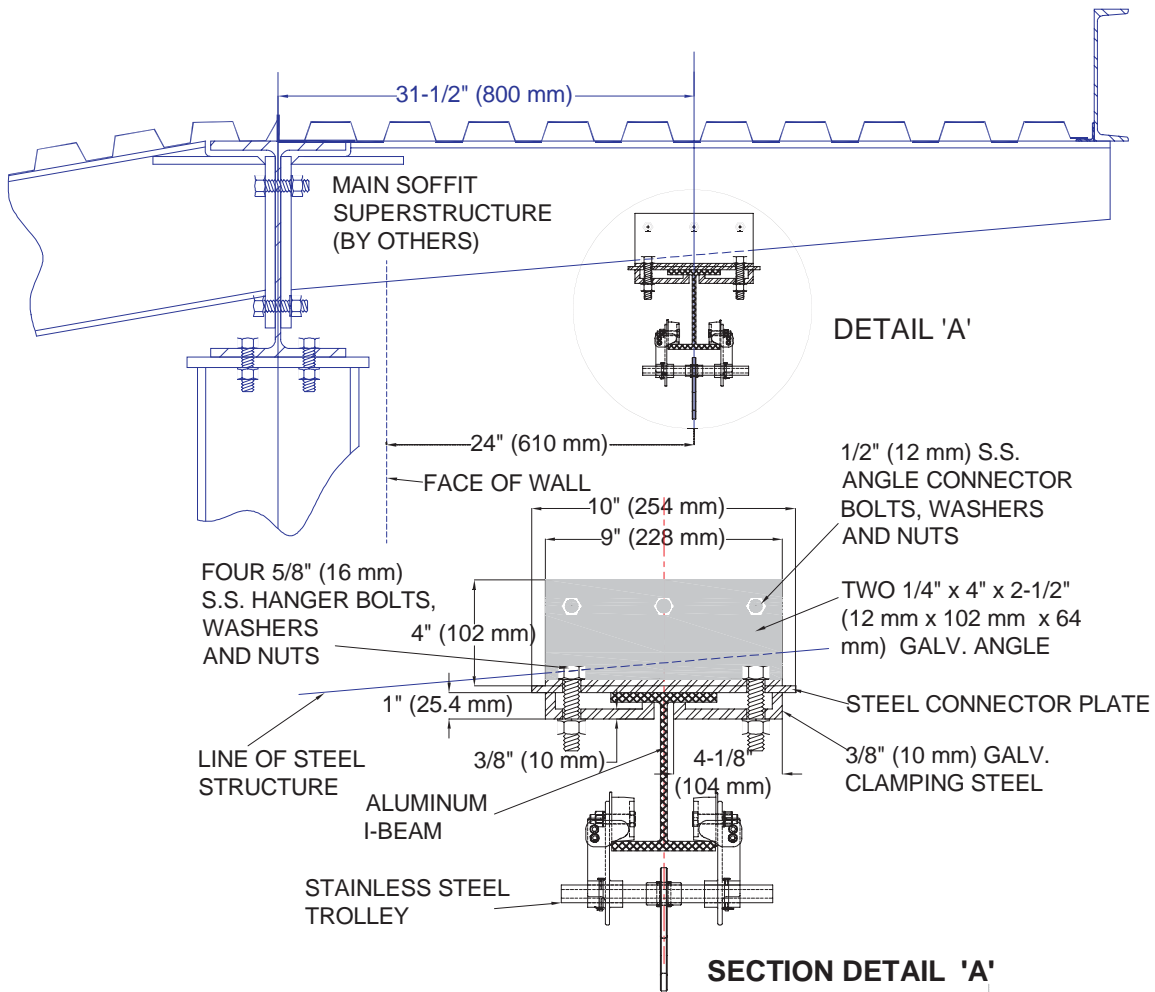
SPECIFICATION (Short Form)

Monorail Suspended Maintenance System: Thaler FARA-200 Monorail Suspended Maintenance System to [CSA 291-02] [OSHA 1910.66, Sub parts D and F] with T-6061 aluminum I beam to suit main structure; 1/4" x 4" x 4" (12 mm x 102 mm x 102 mm) steel angles for bolting I-beam to main structure; 3/8" (10 mm) galvanized clamps; 10" (254 mm) wide steel connector plates; s.s. hanger bolts, washers and nuts of sizes shown on drawings; s.s. trolleys with s.s. eyes; manufactured by Thaler Metal Industries, 1-800-387-7217 (Mississauga, Ontario, Canada) or 1-800-576-1200 (New Braunfels, TX), installed as per manufacturer's written instructions. Provide 20 year warranty against leaks, condensation and defects in materials and/or manufacture.

INSTALLATION

"Installation Instructions" are provided with every Thaler product. Essentially, the Thaler FARA-200 Monorail Suspended Maintenance System is installed by placing and bolting I-beam to main structure using angles, clamps and bolts and then installing the stainless steel trolleys over the bottom flange of the I-beam.

Ordering: Available throughout North America. Contact Thaler for list of distributors and current cost information. Most products are readily available from stock.



SIDE VIEW OF THALER FARA-200 MONORAIL SUSPENDED ACCESS MAINTENANCE SYSTEM (Exposed Beam)