

ROOF SPECIALTIES FARA-170 SWIVEL OUTRIGGER BEAM AND BASE

DESCRIPTION

The Thaler FARA-170 Outrigger consists of a galvanized, urethane insulated, hollow section steel base (bolted to roof slab) rectangular hollow section steel beam complete with handle grip and stainless steel suspension line U bolt attachment. A flashing sleeve for the base completes the assembly. A separate fall arrest roof anchor is required for attaching a worker's lifeline.

Prominent Features: Urethane insulated base prevents formation of condensation (corrosion protection). Maintenance free (attractive, neat flashing never needs caulking; see Thaler EPDM Flashing Seals literature). Structural integrity is backed by \$7,000,000.00 liability insurance.

Options: All stainless steel outrigger base. Other base securements available. PVC coated flashing deck flange for PVC roof membrane. Bituminous painted deck flange for BUR and ModBit roof membrane. See Thaler roof anchor literature for fall arrest lifeline anchor options.

RECOMMENDED USE

Suitable for all flat roofs for suspending a platform or single point access equipment such as baskets (cages) and manually or power operated boat-swin chairs.

APPLICABLE STANDARDS

Thaler FARA Outriggers and Fall Arrest Roof Anchors conform to all Canadian and U.S. standards, provincial and state labour/safety codes and materials standards relating to anchor fabrication, window cleaning and other suspended maintenance operations. Conformance includes CSA, OML, ASME, ANSI, IWCA, OSHA, CAL, OSHA, AISC, AWS, and other references. Thaler SJ-34 New-Standard STACK JACK Flashing conforms to CSA B272-93. See separate Thaler FARA Systems Fall Protection literature for specific data.

WARRANTY

20 year warranty against **leaks, condensation and defects** in materials and/or manufacture when installed in accordance with Thaler "Installation Instructions". Copy of Warranty Certificate available upon request.

MAINTENANCE

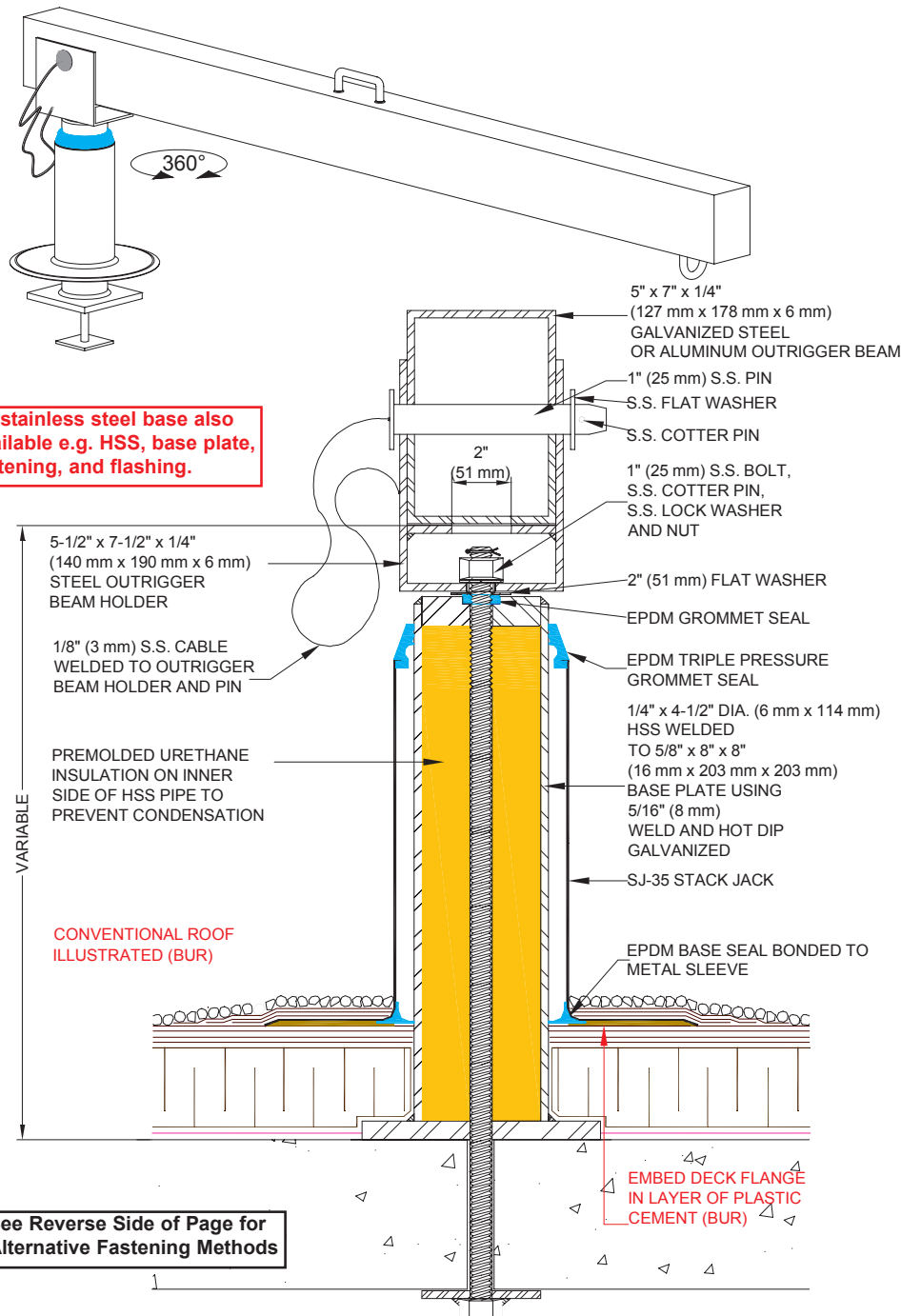
Regulatory authorities require outriggers and anchors to be inspected annually with inspection data (date, inspector's name and comments) recorded in the Fall Protection Maintenance Log Book for Window Cleaning and/or Other Suspended Access Maintenance Operations (including travel restraint). Apart from this requirement, Thaler anchors require no maintenance (maintenance free).

PLANNING SERVICE

Thaler will provide layout drawings for outriggers and fall arrest anchors in compliance with all applicable standards, safety regulations and local building codes. A nominal, low-cost fee is charged for this service (refunded if Thaler secures the contract to supply the anchors).

SPECIFICATION (Short Form)

Outrigger arm and base: Thaler FARA-170 complete outrigger assembly to [CSA Z91-02] [OSHA 1910.66, Sub parts D and F] with urethane filled, hot dipped galv. ASTM 500C base 4" dia. x 1/4" (102 mm x 6 mm) welded to 5/8" x 8" x 8" (16 mm x 203 mm x 203 mm) ASTM 500C base plate and bolted through roof deck to 1/4" x 4" x 4" (6 mm x 102 mm x 102 mm) back up plate using a single 1" (25 mm) dia. s.s. bolt; beam holder 1/4" (6 mm) thick galv. 44W steel with 1" (25 mm) dia. s.s. pin tethered with 1/8" (3 mm) s.s. cable; outrigger beam 5" x 7" x 1/4" (127 mm x 178 mm x 6 mm) galvanized HSS with handle grip and s.s. U bolt suspension line attachment; SJ-35, 13" (330 mm) high New-Standard STACK JACK flashing of [.064" (1.6 mm) mill finish 1100-O1 alloy aluminum] [.032" (0.831 mm) 22 oz. copper] [.031" (0.79 mm) 22 ga. Type 304 stainless steel] to CSA B272-93, with EPDM Triple Pressure Grommet Seal and EPDM Base Seal and [PVC coated deck flange] [bituminous painted deck flange]; manufactured by Thaler Metal Industries, 1-800-387-7217 (Mississauga, Ontario, Canada) or 1-800-576-1200 (New Braunfels, TX), installed as per manufacturer's written instructions. Provide 20 year warranty against leaks, condensation and defects in materials and/or manufacture.



All stainless steel base also available e.g. HSS, base plate, fastening, and flashing.

See Reverse Side of Page for Alternative Fastening Methods

FARA-170 SWIVEL OUTRIGGER ARM AND BASE

PATENTED

INSTALLATION

"Installation Instructions" are provided with every Thaler product. Essentially, the Thaler FARA-170 outrigger is installed by through bolting the base to the structural roof deck as per layout drawings, using a maximum torque of 125 lbf-ft. (169 Nm), then placing the flashing sleeve over the base and membrane and as follows:

BUR: Set flashing deck flange in layer of plastic cement and flash in with 3 overlapping layers of felt flashing.

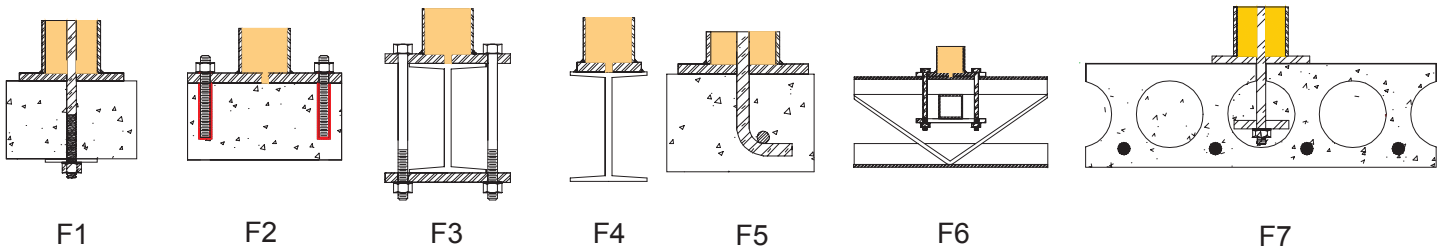
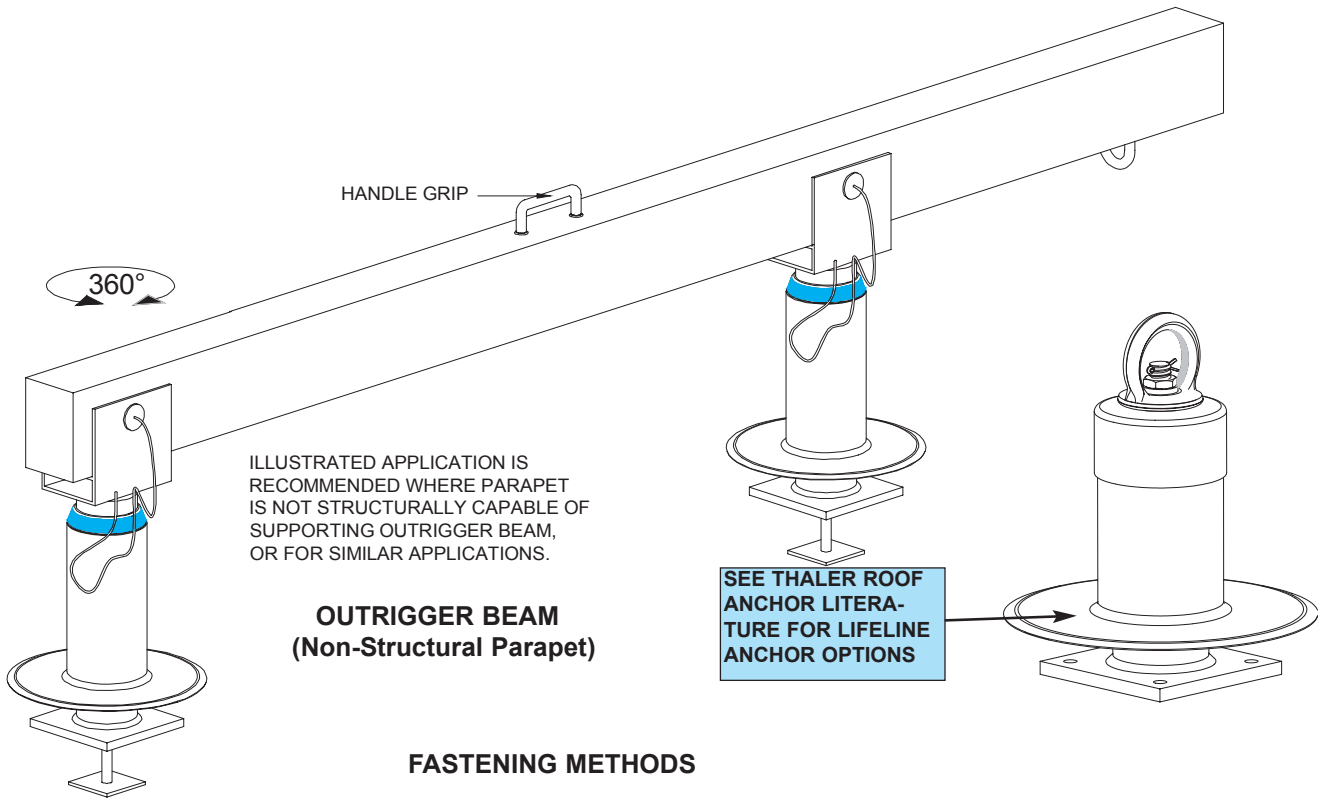
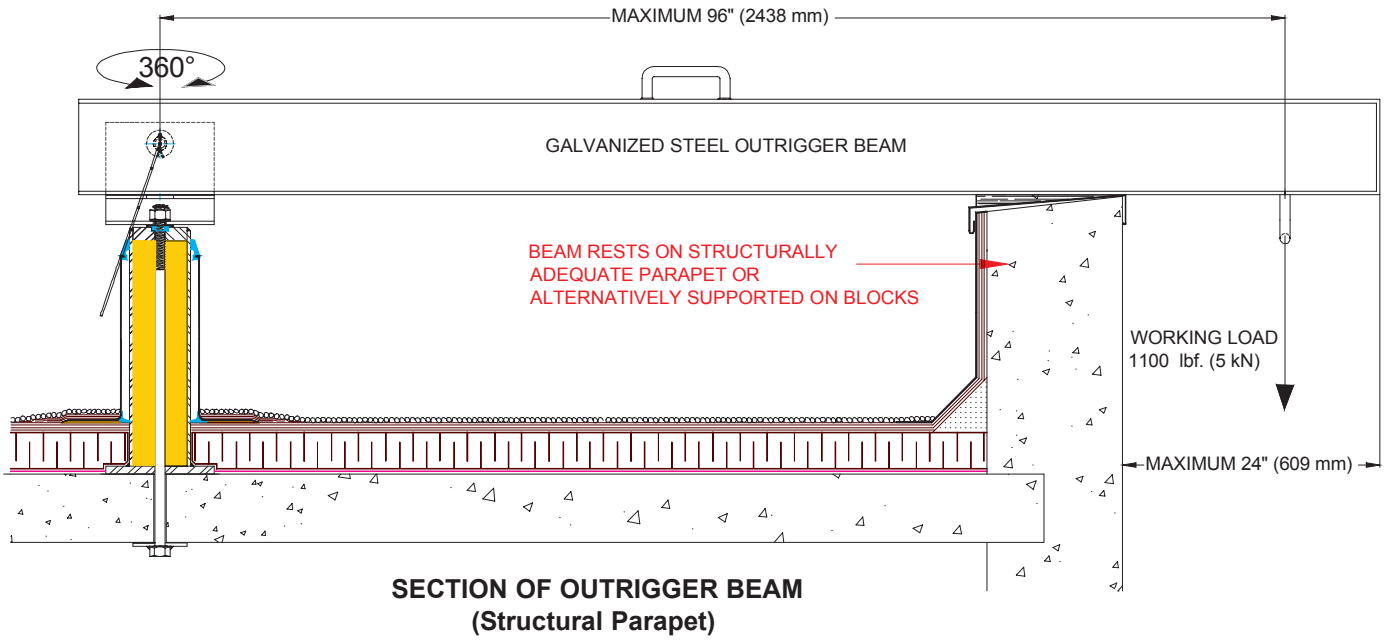
ModBit: Torch membrane until bitumen is fluid and set flashing deck flange into fluid. Flash in flange with two overlapping layers of ModBit and seal with asphalt sealer. Do not overheat (melt) EPDM base seal.

Single Ply: Set flashing deck flange in layer of membrane adhesive and extend single ply up sleeve to highest elevation possible and clamp membrane to STACK JACK Flashing. Note: for PVC membrane, specify PVC coated STACK JACK by adding suffix P to end of model number, e.g. FARA-170-A-P; weld roofing to deck flange using PVC torch.

Precautions: Apply an asphaltic or other type protective coating to aluminum STACK JACK Flashing to a height of 2" (51 mm) above a limestone ballast to avoid corrosive reaction. Also, if coating deck flange with bituminous paint on site, allow 24 hours for drying before applying roof membrane.

Outrigger arm: Place rear of arm into the holder and secure using the single s.s. pin. Rest front of arm on a structurally adequate parapet wall or support on blocks on the roof if the parapet wall is not structurally adequate. When not being used for maintenance, store arm in mechanical room or other location.

Ordering: Specify flashing material required by adding the appropriate suffix to model number e.g. FARA-170-A, for aluminum, etc. Available throughout North America. Contact Thaler for list of distributors and current cost information. Most products are readily available from stock.



Specify the fastening method required by adding the appropriate suffix to model number (e.g. FARA-170-F1)