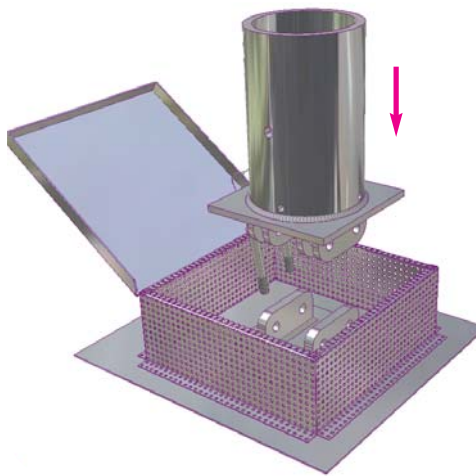


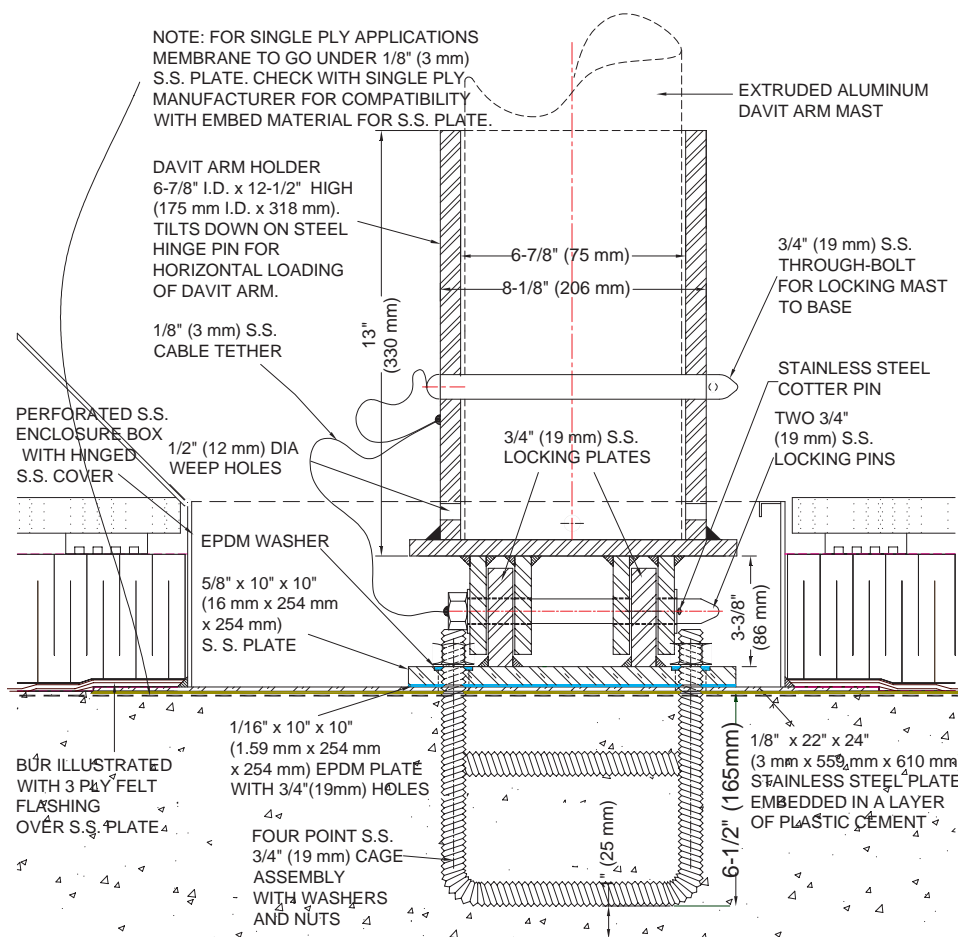
FARA-160 RECESSED DAVIT ARM BASE



Recessed Arm Base Without Mast Holder



Recessed Davit Arm Base With Mast Holder



FARA-160 RECESSED DAVIT ARM BASE (Cast-In-Place)

INSTALLATION

"Installation Instructions" are provided with every Thaler product. Essentially, the Thaler FARA-160 Recessed Davit Arm Base with stainless steel enclosure box is installed by placing over cast-in-place cage assembly and bolting base to the structure using a maximum torque of 150 ft.-lbf. (203 Nm).

BUR: Set stainless steel under-base plate in layer of plastic cement and flash in with 3 overlapping layers of felt flashing.

ModBit: Torch membrane until bitumen is fluid and set under-base plate into fluid. Flash in flange with two overlapping layers of ModBit and seal with asphalt sealer.

Single Ply: Set stainless steel under-plate onto single ply membrane in embed material recommended by single ply manufacturer.

Davit arm: With the davit arm holder in the horizontal position, insert davit mast into the holder, insert the hinge pin, manually raise the arm into position and secure using the locking pin. When not being used for maintenance, store arm in mechanical room or other location, indoors preferably.

DESCRIPTION

The Thaler FARA-160 Recessed Davit Arm Base consists of a structural stainless steel base plate with two vertical locking plates welded to the base plate, large stainless steel under-base plate, EPDM divider, stainless steel enclosure box, steel davit arm holder, which is designed to receive a FARA-155-RH rotating head Davit Arm. See Thaler FARA-155-RH Davit Arm literature for davit arm data. A separate fall arrest roof anchor is required for attaching each worker's lifeline.

Prominent Features: EPDM divider and EPDM washer prevents leakage (corrosion protection). Maintenance free. Structural integrity is backed by high \$7,000,000.00 liability insurance.

Options: All stainless steel Recessed Davit Arm Base. Other base securements available.

RECOMMENDED USE

Suitable for all low slope/flat terrace roofs, as a davit arm base used for suspending a platform or single point access equipment such as baskets (cages) and manually or power operated boatswain chairs.

APPLICABLE STANDARDS

Thaler FARA-160 Davit Base conforms to all Canadian and U.S. standards, provincial and state labour/safety codes and materials standards relating to anchor fabrication, window cleaning and other suspended maintenance operations. Conformance includes CSA, OML, ASME, ANSI, IWCA, OSHA, AISC, AWS, and other references.

WARRANTY

20 year warranty (lifetime on stainless steel) against **leaks, condensation and defects** in materials and/or manufacture when installed in accordance with Thaler "Installation Instructions". Copy of Warranty Certificate available upon request.

MAINTENANCE

Regulatory authorities require davit bases to be inspected annually with inspection data (date, inspector's name and comments) recorded in the Fall Protection Maintenance Log Book for Window Cleaning and/or Other Suspended Access Maintenance Operations (including travel restraint). Apart from this requirement, Thaler davit arm bases require no maintenance (maintenance free).

PLANNING SERVICE

Without obligation, Thaler will provide layout drawings for davit bases and accompanying fall arrest anchors in compliance with all applicable standards, safety regulations and local building codes.

SPECIFICATION (Short Form)

Recessed Davit arm base: Thaler FARA-160 Recessed Davit Arm Base designed to receive a FARA-155-RH, rotating head Davit Arm; to [CSA Z91-02] [OSHA 1910.66, Sub parts D and F] with stainless steel 5/8" x 10" x 10" (16 mm x 254 mm x 254 mm) base plate and two s.s. 3/4" (19 mm) locking plates; 18 Ga. x 18-1/2" x 16-1/2" (1.27 mm x 457 mm x 406 mm) stainless steel enclosure box with s.s. cover; 1/8" x 22" x 24" (3 mm x 559 mm x 610 mm) s.s. under-base plate; 3/4" (19 mm) dia. s.s. cage assembly; galvanized davit arm holder 5/8" x 6-7/8" I.D. (16 mm x 175 mm) ASTM 500C, with weep holes, connected to steel flanges using two 3/4" (19 mm) s.s. hinge and locking pins tethered with 1/8" (3 mm) s.s. cable; manufactured by Thaler Metal Industries, 1-800-387-7217 (Mississauga, Ontario, Canada) or 1-800-576-1200 (New Braunfels, TX), installed as per manufacturer's written instructions. Provide 20 year warranty against defects in materials and/or manufacture.

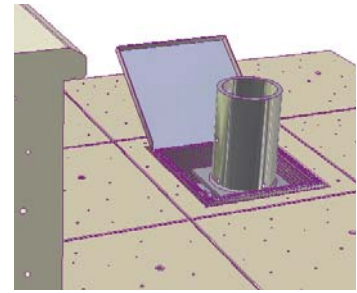
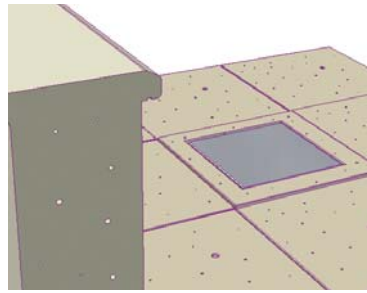
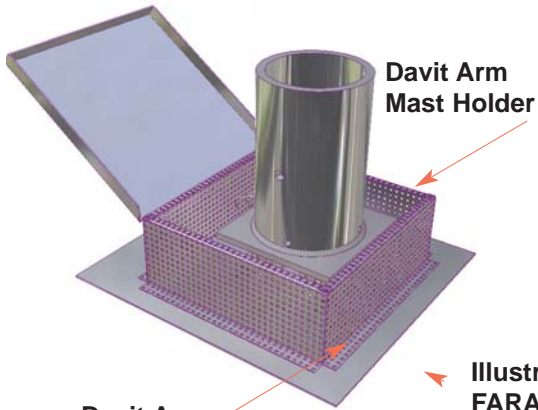
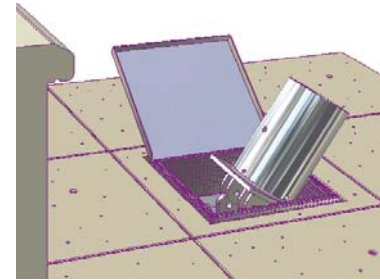


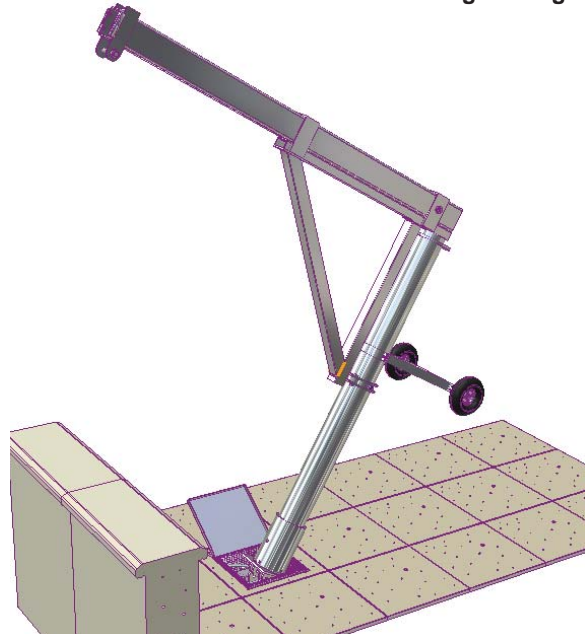
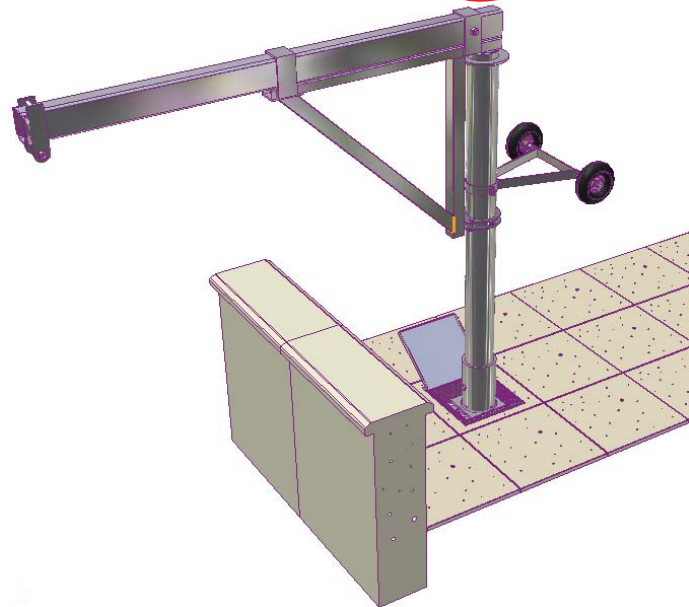
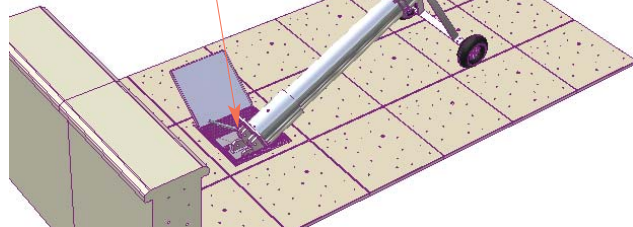
Illustration Showing FARA-160 Recessed Davit Arm Base With Davit Arm Holder



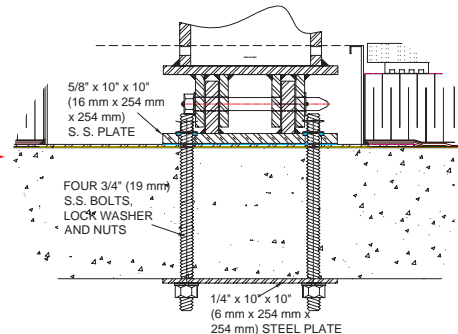
FARA-155-RH DAVIT ARM

360°

FARA-160 Recessed Davit Arm Base



ALTERNATIVE FASTENING METHOD



Bolt Through