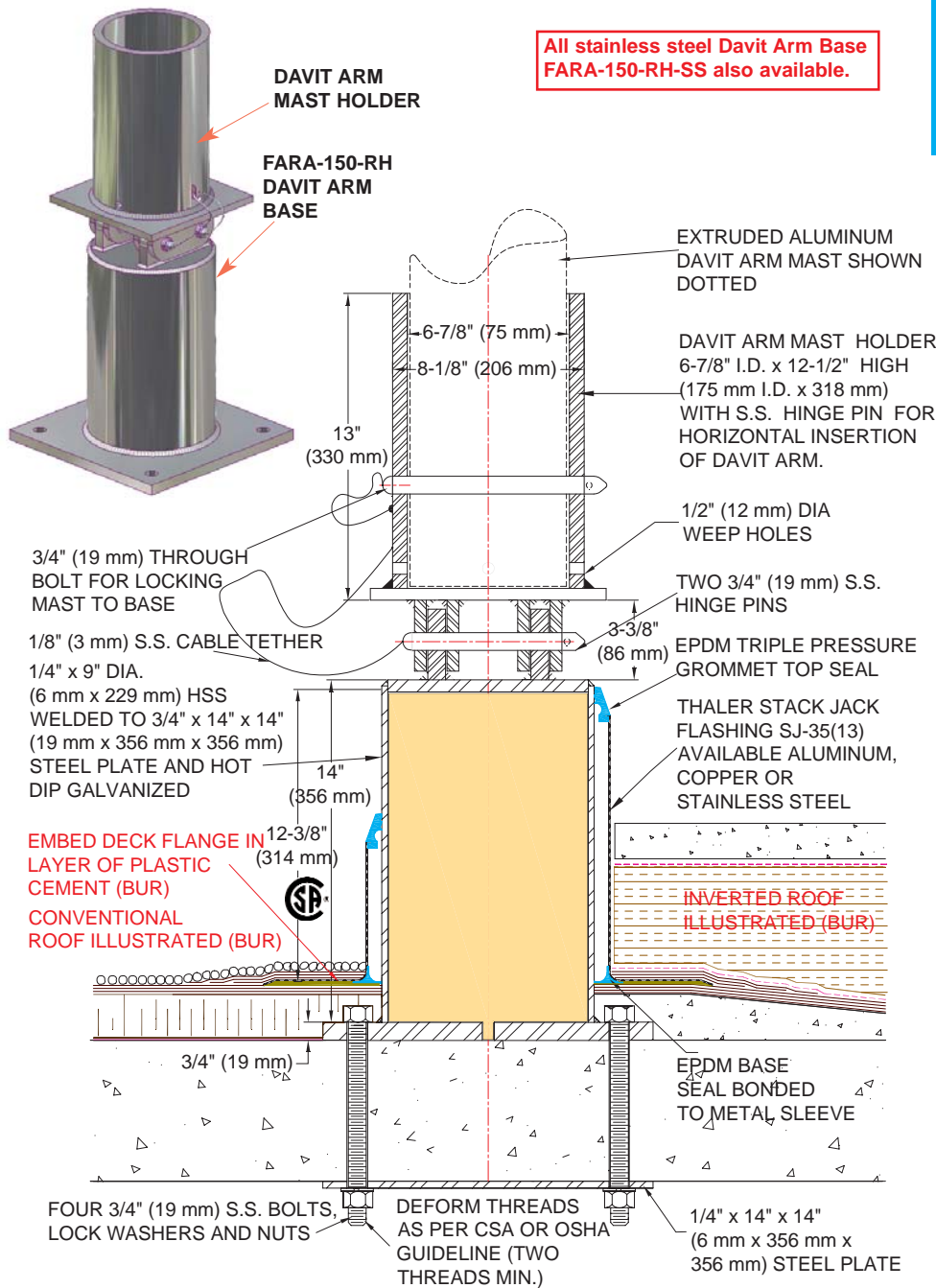


ROOF SPECIALTIES

FARA-150-RH DAVIT ARM BASE For Window Cleaning or Exterior Building Maintenance



FARA-150-RH DAVIT ARM BASE (Bolt Through)

PATENTED

with EPDM Triple Pressure Grommet Top Seal and EPDM Base Seal and [PVC coated deck flange] [bituminous painted deck flange]; manufactured by Thaler Metal Industries, 1-800-387-7217 (Mississauga, Ontario, Canada) or 1-800-576-1200 (New Braunfels, TX), installed as per manufacturer's written instructions. Provide 20 year warranty against defects in materials and/or manufacture.

INSTALLATION

"Installation Instructions" are provided with every Thaler product. Essentially, the Thaler FARA-150-RH Davit Arm Base is installed by through bolting the base to the structural concrete roof deck as per layout drawings, using a maximum torque of 150 ft-lbf (203 Nm), grouting over the bolt heads (inverted roof only), then placing the flashing sleeve over the base and membrane, bolting and deforming the anchor rod threads from beneath the deck, and as follows:

BUR: Set flashing deck flange in layer of plastic cement and flash in with 3 overlapping layers of felt flashing.

ModBit: Torch membrane until bitumen is fluid and set flashing flange into fluid. Flash in flange with two overlapping layers of ModBit and seal with asphalt sealer. Do not overheat (melt) EPDM Base Seal.

Single Ply: Set deck flange in layer of membrane adhesive and extend single ply up sleeve to highest elevation possible and clamp membrane to STACK JACK Flashing. Note: for PVC membrane, specify PVC coated STACK JACK by adding suffix P to end of model number, e.g. FARA-150-RH-P; weld roofing to deck flange using PVC torch.

Precautions: Apply an asphaltic or other type protective coating to exposed aluminum STACK JACK Flashing to a height of 2" (51 mm) above a limestone ballast to avoid corrosive reaction. Also, if coating deck flange with bituminous paint on site, allow 24 hours for drying before applying roof membrane.

Davit arm: With the davit arm holder in the horizontal position, insert davit mast into the holder, insert the hinge pin, manually raise the arm into position and secure using the locking pin. When not being used for maintenance, store arm in mechanical room or other location, indoors preferably.

Ordering: Specify flashing material required by adding the appropriate suffix to model number e.g. FARA-150-RH-A, for aluminum, etc. Available throughout North America. Contact Thaler for list of distributors and current cost information. Most products are readily available from stock.

DESCRIPTION

The Thaler FARA-150-RH Davit Arm Base consists of a galvanized, urethane insulated, hollow section steel base with an galvanized davit arm holder, which is designed to receive a FARA-155-RH rotating head Davit Arm. A flashing sleeve that fits over base completes the assembly. See Thaler FARA-155-RH Davit Arm literature for davit arm data. A separate fall arrest roof anchor is required for attaching each worker's lifeline.

Prominent Features: Urethane insulated base prevents formation of condensation (corrosion protection). Maintenance free (attractive, neat flashing never needs caulking; see Thaler EPDM Flashing Seals literature. Structural integrity is backed by high \$7,000,000.00 liability insurance. **Options:** All stainless steel Davit Arm Base. Other base securements available. PVC coated flashing deck flange for PVC roof membrane. Bituminous painted flashing deck flange for BUR and ModBit roof membrane.

RECOMMENDED USE

Suitable for all low slope/flat roofs as a davit arm base used to suspend a platform or single point access equipment such as baskets (cages) and manually or power operated boatswain chairs.

APPLICABLE STANDARDS

Thaler FARA Davit Base conforms to all Canadian and U.S. standards, provincial and state labour/safety codes and materials standards relating to anchor fabrication, window cleaning and other suspended maintenance operations. Conformance includes CSA, OML, ASME, ANSI, IWCA, OSHA, AISC, AWS, and other references. Thaler SJ-34(7) and SJ-35(13) New-Standard STACK JACK Flashing conforms to CSA B272-93.

WARRANTY

20 year warranty (lifetime on stainless steel) against **leaks, condensation and defects** in materials and/or manufacture when installed in accordance with Thaler "Installation Instructions". Copy of Warranty Certificate available upon request.

MAINTENANCE

Regulatory authorities require davit bases to be inspected annually with inspection data (date, inspector's name and comments) recorded in the Fall Protection Maintenance Log Book for Window Cleaning and/or Other Suspended Access Maintenance Operations (including travel restraint). Apart from this requirement, Thaler davit arm bases require no maintenance (maintenance free).

PLANNING SERVICE

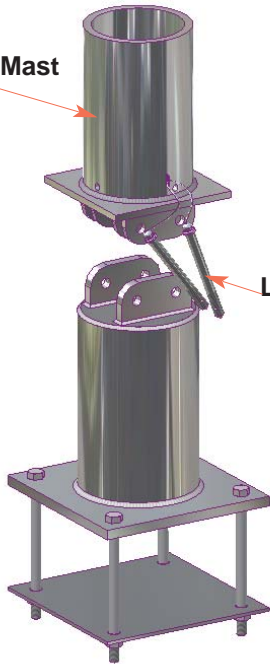
Without obligation, Thaler will provide layout drawings for davit bases and accompanying fall arrest anchors in compliance with all applicable standards, safety regulations and local building codes.

SPECIFICATION (Short Form)

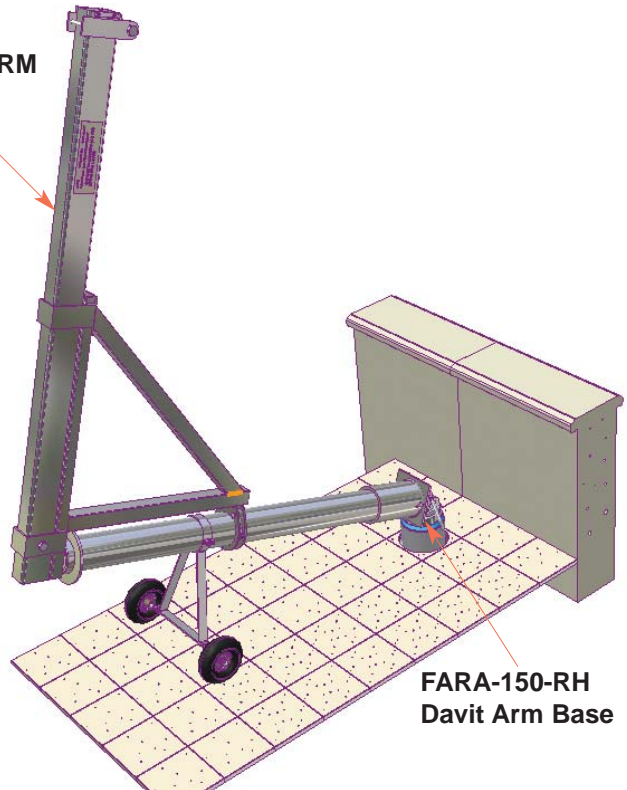
Davit arm bases: Thaler FARA-150-RH Davit Arm Base designed to receive a FARA-155-RH, rotating head Davit Arm; to [CSA Z91-02] [OSHA 1910.66, Sub parts D and F] with urethane insulated, hot dipped galv. ASTM 500C base 9" dia. x 1/4" (229 mm x 6 mm) welded to 3/4" x 14" x 14" (19 mm x 356 mm x 356 mm) ASTM 500C base plate and bolted to 1/4" x 14" x 14" (6 mm x 356 mm x 356 mm) under-deck plate using four 3/4" (19 mm) dia. s.s. bolts; davit arm mast holder 5/8" x 6-7/8" I.D. (16 mm x 175 mm) ASTM 500C, with weep holes, connected to steel flanges using two 3/4" (19 mm) s.s. hinge and locking pins tethered with 1/8" (3 mm) s.s. cable; [SJ-34, 7" (178 mm)] [SJ-35, 13" (330 mm)] high New-Standard STACK JACK flashing of [.064" (1.6 mm) mill finish 1100-OT alloy aluminum] [.032" (0.831 mm) 24 oz. copper] [.031" (0.79 mm) 22 ga. Type 304 stainless steel] to CSA B272-93, (continued on left)

FARA-155-RH DAVIT ARM

Davit Arm Mast Holder



Locking Pins



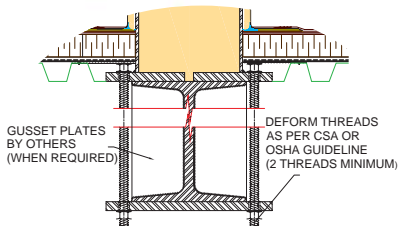
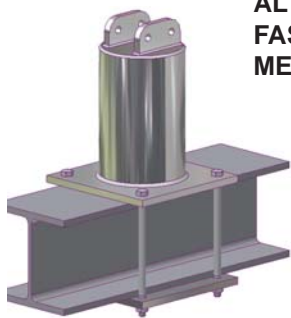
FARA-150-RH Davit Arm Base

Illustration Showing FARA-150-RH Davit Arm Base With Davit Arm Holder

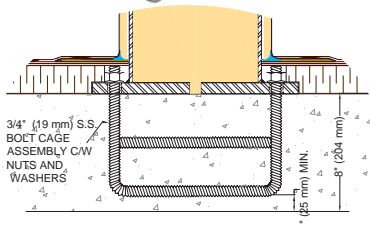
STEP 1 (Pin Davit Arm Mast Holder to Base)

STEP 2 (Insert Mast Into Holder and Raise Arm Into Place)

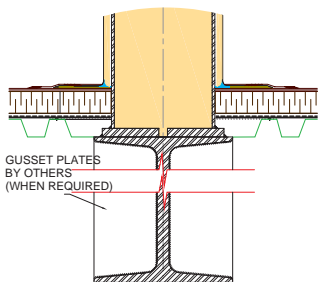
ALTERNATIVE FASTENING METHODS



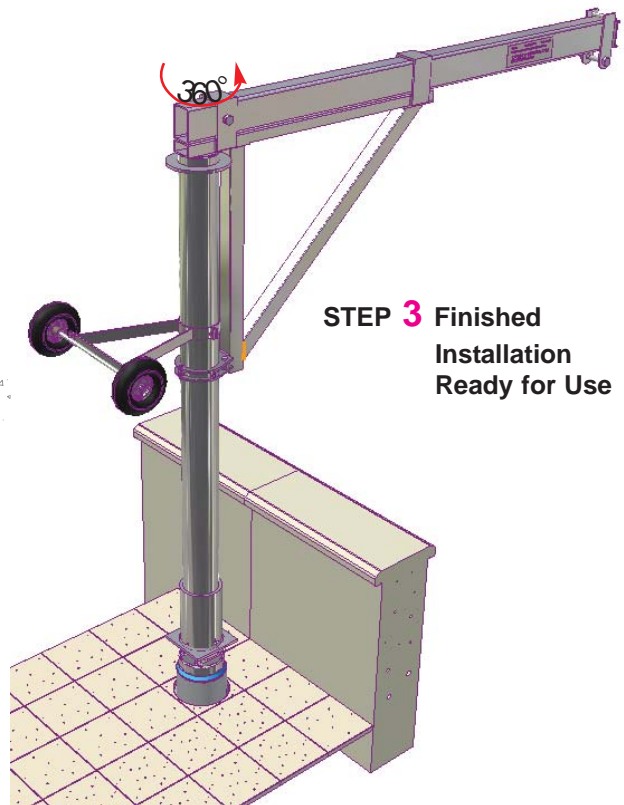
Bolt Around Beam



Cast-In-Place



Welded



STEP 3 Finished Installation Ready for Use