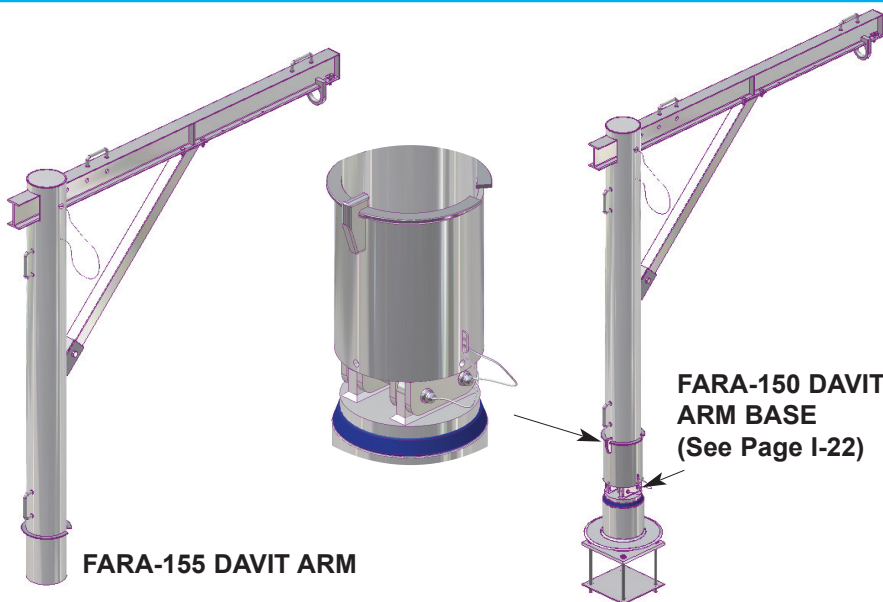


ROOF SPECIALTIES

FARA-155 DAVIT ARM
For Window Cleaning or
Exterior Building Maintenance
(Fixed Head)



DESCRIPTION

The Thaler FARA-155 Davit Arm consists of a round extruded aluminum mast, and an aluminum horizontal 360° rotating I-beam arm equipped with a sliding stainless steel suspension line attachment plate, and levelling devices. The davit arm requires a Thaler FARA-150 Davit Arm Base to complete the assembly (see separate literature). Also a separate fall arrest anchor is required for attaching each worker's lifeline.

Prominent Features: Structural integrity is backed by \$7,000,000.00 liability insurance.

Options: See Thaler roof anchor literature for lifeline anchor options. See Thaler ARS-115 Rail Post Roof Support literature for roof edge guardrail protection.

RECOMMENDED USE

Suitable for all flat roofs for suspending a platform or single point access equipment such as baskets (cages) and manually or power operated boatswain chairs.

APPLICABLE STANDARDS

Thaler FARA Davit Arms conform to all Canadian and U.S. standards, provincial and state labour/safety codes and materials standards relating to anchor fabrication, window cleaning and other suspended maintenance operations. Conformance includes CSA, OML, ASME, ANSI, IWCA, OSHA, CAL, OSHA, AISC, AWS, and other references. See separate Thaler FARA Systems Fall Protection literature for specific data.

WARRANTY

20 year warranty against defects in materials and/or manufacture when installed in accordance with Thaler "Installation Instructions". Copy of Warranty Certificate available upon request.

MAINTENANCE

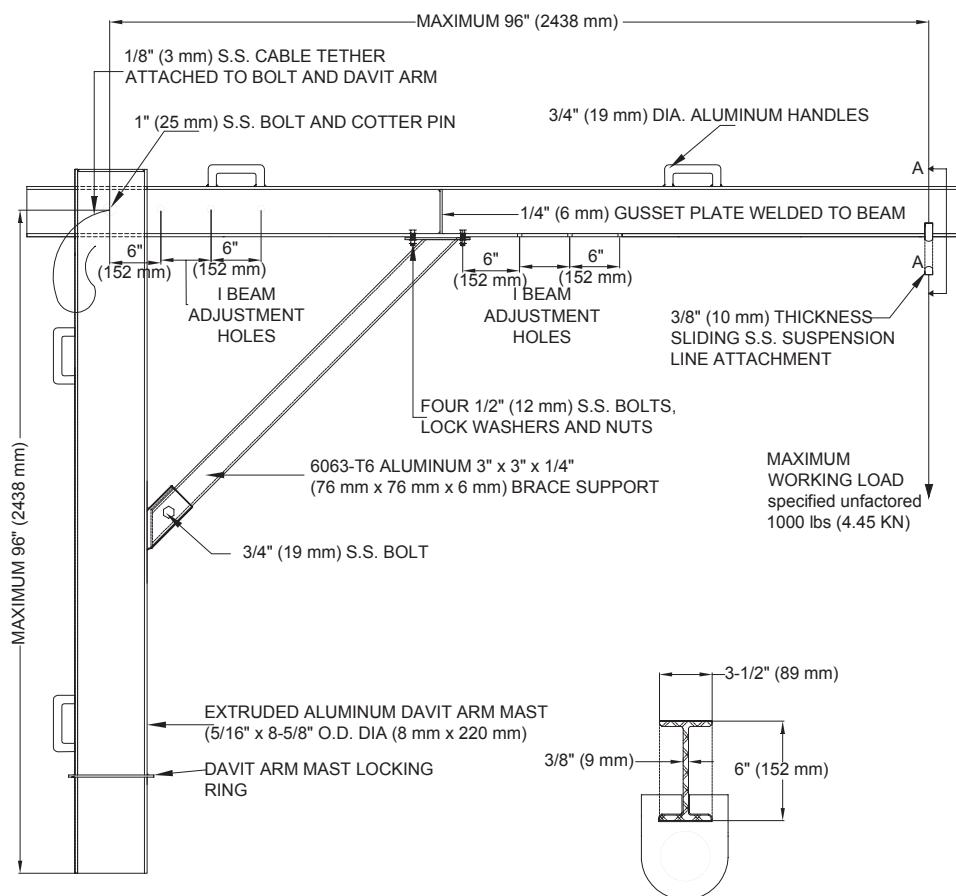
Regulatory authorities require davits to be inspected annually with inspection data (date, inspector's name and comments) recorded in the Fall Protection Maintenance Log Book for Window Cleaning and/or Other Suspended Access Maintenance Operations (including travel restraint). Apart from this requirement, Thaler anchors require no maintenance (maintenance free).

PLANNING SERVICE

Thaler will provide layout drawings for davit bases, davit arms and fall arrest anchors in compliance with all applicable standards, safety regulations and local building codes. A nominal, low-cost fee is charged for this service (refunded if Thaler secures the contract to supply the anchors).

SPECIFICATION (Short Form)

Davit arms: Thaler Fara-155 complete davit arm assembly to [CSA Z91-02] [OSHA 1910.66, Sub parts D and F] for use with Thaler FARA-150 Davit Arm Base, with: mast 5/16" x 8-5/8" O.D. (8 mm x 220 mm) 6061-T6 extruded alum. with handle grips; horizontal 6061-T6 alum. I beam 1/4" x 3-1/2" x 6" (6 mm x 89 mm x 152 mm) with 3/8" (10mm) thick sliding s.s. suspension line attachment plate and handle grips; strut reinforcing 1/4" x 3" x 3" (6 mm x 76 mm x 76 mm) with 1/4" (6 mm) connector plates, manufactured by Thaler Metal Industries, 1-800-387-7217 (Mississauga, Ontario, Canada) or 1-800-576-1200 (New Braunfels, TX), installed as per manufacturer's written instructions. Provide 20 year warranty against defects in materials and/or manufacture.



FARA-155 DAVIT ARM

PATENTED

INSTALLATION

"Installation Instructions" are provided with every Thaler product. Essentially, the Thaler FARA-155 Davit Arm is installed by friction fitting the davit arm into the davit arm base, and as follows:

Davit arm: With the davit arm holder (attached to the FARA-150 Davit Arm Base) in the horizontal position, insert davit mast into the holder, manually raise the arm into position and secure using the two s.s. hinge pins. When not being used for maintenance, store arm in mechanical room or other location

Ordering: Available throughout North America. Contact Thaler for list of distributors and current cost information. Most products are readily available from stock.

THALER 03 11 24 00
 2005
 MAINTENANCE EQUIPMENT
 fall arrest roof anchors

