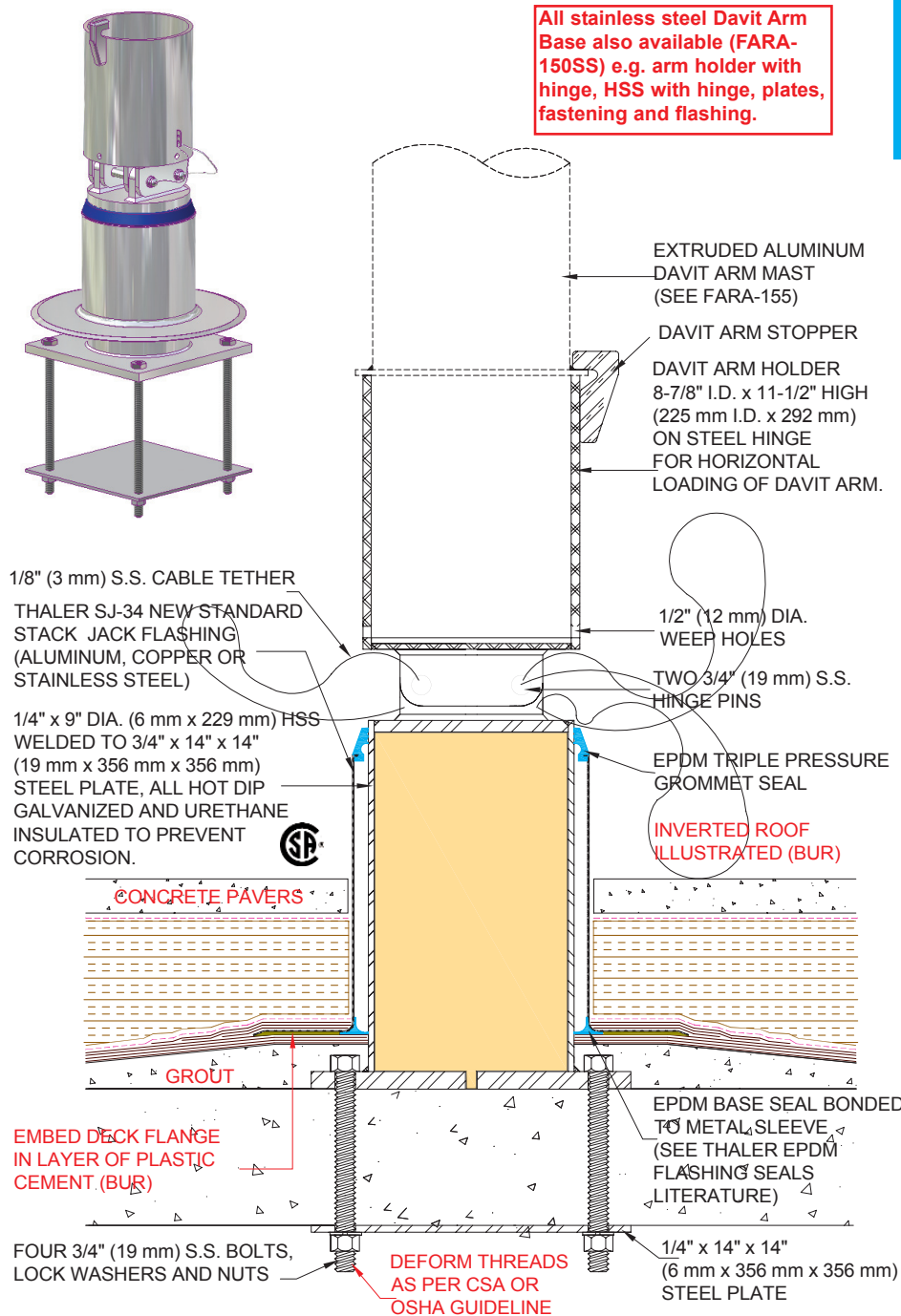


# FARA-150 DAVIT ARM BASE



All stainless steel Davit Arm Base also available (FARA-150SS) e.g. arm holder with hinge, HSS with hinge, plates, fastening and flashing.

**FARA-150 DAVIT ARM BASE**  
PATENTED

**DESCRIPTION**

The Thaler FARA-150 Davit Arm Base consists of a galvanized, urethane insulated, hollow section steel base with an galvanized davit arm holder, which is designed to receive a FARA-155 Davit Arm. A flashing sleeve that fits over base completes the assembly. See Thaler FARA-155 Davit Arm literature for davit arm data. A separate fall arrest roof anchor is required for attaching each worker's lifeline.

**Prominent Features:** Urethane insulated base prevents formation of condensation (corrosion protection). Maintenance free (attractive, neat flashing never needs caulking; see Thaler EPDM Flashing Seals literature). Structural integrity is backed by \$7,000,000.00 liability insurance.

**Options:** All stainless steel Davit Arm Base. Other base securements available. PVC coated flashing deck flange for PVC roof membrane. Bituminous painted flashing deck flange for BUR and ModBit roof membrane. See Thaler roof anchor literature for lifeline anchor options. See Thaler ARS-115 Rail Post Roof Support literature for roof edge guardrail protection.

**RECOMMENDED USE**

Suitable for all flat roofs as a davit arm base used to suspend a platform or single point access equipment such as baskets (cages) and manually or power operated boatswain chairs.

**APPLICABLE STANDARDS**

Thaler FARA Davit Bases conform to all Canadian and U.S. standards, provincial and state labour/safety codes and materials standards relating to anchor fabrication, window cleaning and other suspended maintenance operations. Conformance includes CSA, OML, ASME, ANSI, IWCA, OSHA, CAL, OSHA, AISC, AWS, and other references. Thaler SJ-34 New-Standard STACK JACK Flashing conforms to CSA B272-93. See separate Thaler FARA Systems Fall Protection literature for specific data.

**WARRANTY**

20 year warranty (lifetime on stainless steel) against leaks, condensation and defects in materials and/or manufacture when installed in accordance with Thaler "Installation Instructions". Copy of Warranty Certificate available upon request.

**MAINTENANCE**

Regulatory authorities require davit bases to be inspected annually with inspection data (date, inspector's name and comments) recorded in the Fall Protection Maintenance Log Book for Window Cleaning and/or Other Suspended Access Maintenance Operations (including travel restraint). Apart from this requirement, Thaler davit arm bases require no maintenance (maintenance free).

**PLANNING SERVICE**

Thaler will provide layout drawings for davit bases and accompanying fall arrest anchors in compliance with all applicable standards, safety regulations and local building codes. A nominal, low-cost fee is charged for this service (refunded if Thaler secures the contract to supply the anchors).

**SPECIFICATION (Short Form)**

**Davit arm bases:** Thaler FARA-150 Davit Arm Base designed to receive a FARA-155 Davit Arm; to [CSA 291-02] [OSHA 1910.66, Sub parts D and F] with urethane filled, hot dipped galv ASTM 500C base 9" dia. x 1/4" (229 mm x 6 mm) welded to 3/4" x 14" x 14" (19 mm x 356 mm x 356 mm) ASTM 500C base plate and bolted to 1/4" x 14" x 14" (6 mm x 356 mm x 356 mm) under-deck plate using four 3/4" (19 mm) dia. s.s. bolts; davit arm holder 1/2" x 8-7/8" I.D. (12 mm x 225 mm) ASTM 500C with weep holes, connected to steel hinge using two 3/4" (19 mm) s.s. hinge pins tethered with 1/8" (3 mm) s.s. cable; SJ-34, 7" (178 mm) high New-Standard STACK JACK Flashing of [.064" (1.63 mm) mill finish 1100-0T alloy aluminum] [.032" (0.831 mm) 24 oz. copper] [.031" (0.79 mm) 22 ga. Type 304 stainless steel] to CSA B272-93, with EPDM Triple Pressure Grommet Seal and EPDM Base Seal and [PVC coated deck flange] [bituminous painted deck flange]; manufactured by Thaler Metal Industries, 1-800-387-7217 (Mississauga, Ontario, Canada) or 1-800-576-1200 (New Braunfels, TX), installed as per manufacturer's written instructions. Provide 20 year warranty against defects in materials and/or manufacture

**INSTALLATION**

"Installation Instructions" are provided with every Thaler product. Essentially, the Thaler FARA-150 Davit Arm Base is installed by through bolting the base to the structural concrete roof deck as per layout drawings, using a maximum torque of 100 lbf-ft. (135 Nm), grouting over the bolt heads, then placing the flashing sleeve over the base and membrane and deforming the anchor rod threads from beneath the deck, and as follows:

- BUR:** Set flashing deck flange in layer of plastic cement and flash in with 3 overlapping layers of felt flashing.
- ModBit:** Torch membrane until bitumen is fluid and set flashing flange into fluid. Flash in flange with two overlapping layers of ModBit and seal with asphalt sealer. Do not overheat (melt) EPDM base seal.
- Single Ply:** Set deck flange in layer of membrane adhesive and extend single ply up sleeve to highest elevation possible and clamp membrane to STACK JACK Flashing. Note: for PVC membrane, specify PVC coated STACK JACK by adding suffix P to end of model number, e.g. FARA-150-A-P; weld roofing to deck flange using PVC torch.
- Precautions:** Apply an asphaltic or other type protective coating to exposed aluminum STACK JACK Flashing to a height of 2" (51mm) above a limestone ballast to avoid corrosive reaction. Also, if coating deck flange with bituminous paint on site, allow 24 hours for drying before applying roof membrane.
- Davit arm:** With the davit arm holder in the horizontal position, insert davit mast into the holder, manually raise the arm into position and secure using the two s.s. hinge pins. When not being used for maintenance, store arm in mechanical room or other location.
- Ordering:** Specify flashing material required by adding the appropriate suffix to model number e.g. FARA-150-A, for aluminum, etc. Available throughout North America. Contact Thaler for list of distributors and current cost information. Most products are readily available from stock.



THALER 03 11 24 00 MAINTENANCE EQUIPMENT full arrest roof anchors 2005