

ROOF SPECIALTIES ARS-122 SATELLITE DISH ROOF SUPPORT

DESCRIPTION

Thaler ARS-122 Satellite Dish Roof Support consists of a urethane insulated, epoxy primed, hollow steel support and mounting plate, threaded steel cap with 4" (102 mm) diameter stainless steel mast adapter stub and 8'-0" (1220 mm) long closed end galvanized steel mast for mounting a satellite dish (by others). A weatherproof lock-bolt prevents the adjustable cap including adapter and dish, from counter-rotating during windy conditions. A urethane insulated flashing, available in aluminum, copper, or stainless steel, with EPDM Base Seal, completes the assembly.

Prominent Features: Condensation free. Maintenance free (never needs caulking).

Options: PVC coated flashing deck flange for BUR and ModBit roof membrane. Bituminous painted flashing deck flange for BUR and ModBit roof membrane. See Thaler ARS-133 for antenna roof support.

RECOMMENDED USE

Suitable for all flat roofs as a satellite dish roof support, maximum 8'-0" (1220 mm) dish diameter.

WARRANTY

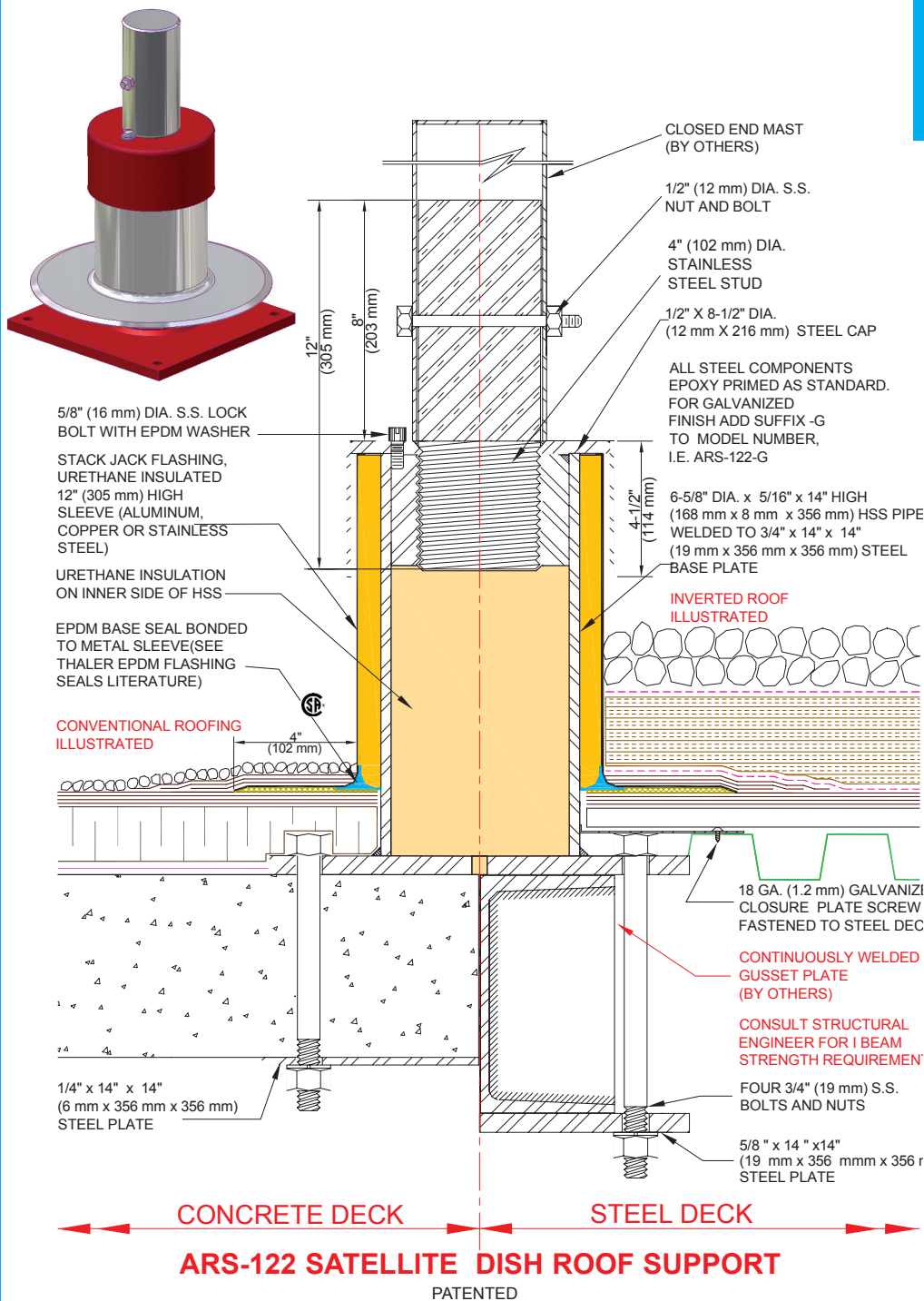
20 year warranty against **leaks, condensation and defects** in materials and/or manufacture when installed in accordance with Thaler "Installation Instructions". Copy of Warranty Certificate available upon request

MAINTENANCE

No maintenance required (maintenance free).

SPECIFICATION (Short Form)

Satellite dish roof supports: Thaler ARS-122 standard 14" (356 mm) high epoxy coated, urethane insulated hollow steel support including appropriate mounting hardware for fastening to structural roof deck (adhesive type by others); threaded steel cap with 4" (102 mm) dia. s.s. mast adapter stub; 1/2" (12 mm) s.s. retaining bolt; galvanized to CSA G164-M1992 weatherproof 5/8" (16 mm) lock-bolt with EPDM seal to prevent counter-rotation of support and dish; manufacturer's standard urethane insulated [.064" (1.6 mm) mill finish 1100-0T alloy aluminum] [.032" (0.831 mm) 24 oz. copper] [.031" (0.79 mm) 22 ga. Type 304 stainless steel] flashing with EPDM Base Seal [and] [PVC coated deck flange] [bituminous painted deck flange]; manufactured by Thaler Metal Industries, 1-800-387-7217 (Mississauga, Ontario, Canada) or 1-800-576-1200 (New Braunfels, TX), installed as per manufacturer's written instructions. Provide 20 year warranty against leaks, condensation and defects in materials and/or manufacture.



INSTALLATION

"Installation instructions" are provided with every Thaler product. Essentially, the Thaler ARS-122 Roof Support is installed by fastening the mounting plate to the structural roof deck, placing the flashing sleeve over the support and roof membrane, installing the steel cap/mast adapter stub, attaching the mast, and as follows:

BUR: Set flashing deck flange in layer of plastic cement and flash in with 3 overlapping layers of felt flashing.

ModBit: Torch membrane until bitumen is fluid and set flashing deck flange into fluid. Flash in flange with two overlapping layers of ModBit and seal with asphalt sealer. Do not overheat (melt) EPDM Base Seal.

Single Ply: Set flashing deck flange in layer of membrane adhesive and extend single ply up sleeve to top of metal flashing and then screw cap down over single ply. Note: for PVC membrane, specify PVC coated flashing aluminum, etc. deck flange by adding suffix P to end of model number. e.g. ARS-122-A-P; weld roofing to deck flange using PVC torch.

Precautions: Apply an asphaltic or other type protective coating to aluminum flashing to a height of 2" (51 mm) above a limestone ballast to avoid corrosive reaction. Also, if coating deck flange with a bituminous paint on site, allow 24 hours for drying before applying roof membrane.

Mast and Dish Components: Thread upper portion of support (with mast adapter stub) onto lower support leg, mechanically attach mast, and finally dish (by others).

Ordering: Specify flashing material required by adding appropriate suffix to model number e.g. ARS-122-A for aluminum, etc. Available throughout North America. Contact Thaler for list of distributors and current cost information. Most products are available from stock.