

## ARS-590 MULTIPLE SATELLITE DISH ROOF SUPPORTS

### DESCRIPTION

Thaler ARS-590 Multiple Satellite Dish Supports consist of a pair of round, urethane insulated, hollow section 6061-T6 aluminum supports with threaded leg assembly for vertical adjustment and mounting plate, mounting hardware (adhesive fasteners supplied by others), cross-bar carrier with EPDM end caps, and any multiple of satellite dish anchor plate assemblies. Urethane insulated STACK JACK flashings available in aluminum, copper, or stainless steel, with EPDM Triple Pressure Grommet Seal at the top of the flashing and EPDM Base Seal, complete the supports.

**Support Spacing:** To be determined by structural engineer for safe loading.

**Prominent Features:** Threaded leg assembly provides up to 4" (102 mm) vertical adjustment. Light weight, strong-as-steel and non corrosive. Maintenance free (EPDM flashing seals never need caulking. See Thaler EPDM Flashing Seals literature).

**Options:** See Section A of manual for STACK JACK Flashing options. See ARS-122 Satellite Dish Roof Supports for single satellite dish support.

### RECOMMENDED USE

Suitable for all flat roofs as a multiple satellite dish support (two or more dishes). Ultimate bearing load is 7350 lbs. (3334 kg) per leg; apply appropriate safety factor.

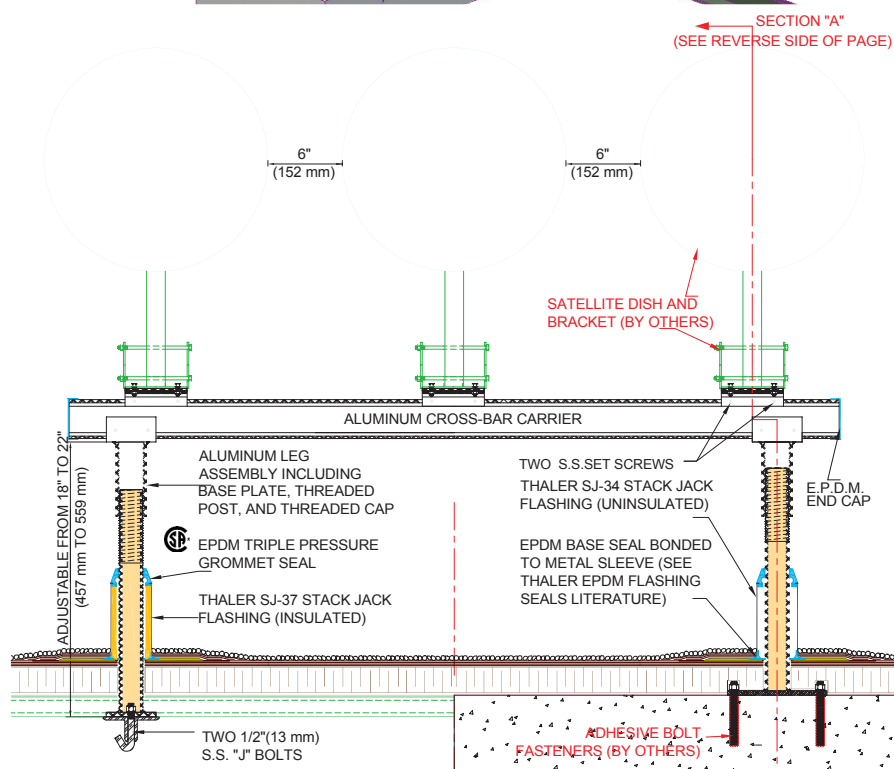
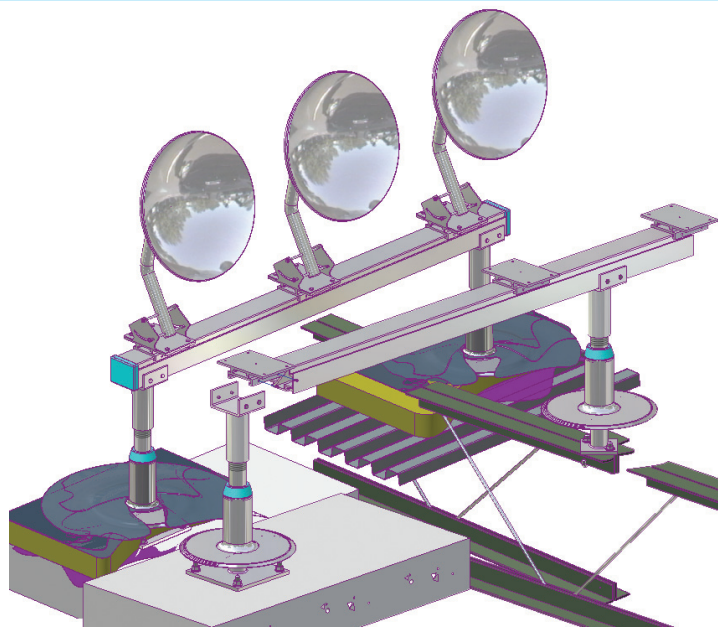
### WARRANTY

20 year warranty against **leaks, condensation and defects** in materials and/or manufacture when installed in accordance with Thaler "Installation Instructions". Copy of Warranty Certificate available upon request.

**MAINTENANCE** No maintenance required (maintenance free).

### SPECIFICATION (Short Form)

**Multiple satellite dish roof supports:** Thaler ARS-590 adjustable height 6061-T6 hollow aluminum with mill finish, urethane insulated supports, 2" (51 mm) dia., with appropriate hardware (adhesive fasteners by others) for fastening to structural roof deck, aluminum cross-bar carrier with EPDM end caps, aluminum anchor plates; [SJ-34, 7" (178 mm)] high New-Standard STACK JACK flashing, urethane insulated, consisting of [.064" (1.6 mm) mill finish 1100-OT alloy aluminum] [.032" (0.831 mm) 24 oz. copper] [.031" (0.79 mm) 22 ga. Type 304 stainless steel], 2" (51 mm) dia. to CSA B272-93; with EPDM Triple Pressure Grommet Seal and EPDM Base Seal [and] [PVC coated deck flange] [bituminous painted deck flange]; manufactured by Thaler Metal Industries, 1-800-387-7217 (Mississauga, Ontario, Canada) or 1-800-576-1200 (New Braunfels, TX), installed as per manufacturer's written instructions. Provide 20 year warranty against leaks, condensation and defects in materials and/or manufacture.



## ARS-590 MULTIPLE SATELLITE DISH SUPPORT

PATENTED

### INSTALLATION

"Installation Instructions" are provided with every Thaler product. Essentially, the Thaler ARS-590 Satellite Dish Roof Supports are installed at required centres by fastening the aluminum mounting plate to the structural roof deck, placing the flashing sleeve over the support and roof membrane, installing the cross-bar carrier assembly, and as follows:

**BUR:** Set flashing deck flange in layer of plastic cement and flash in with 3 overlapping layers of felt flashing.

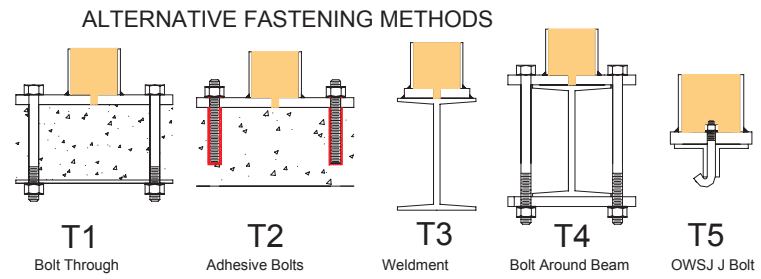
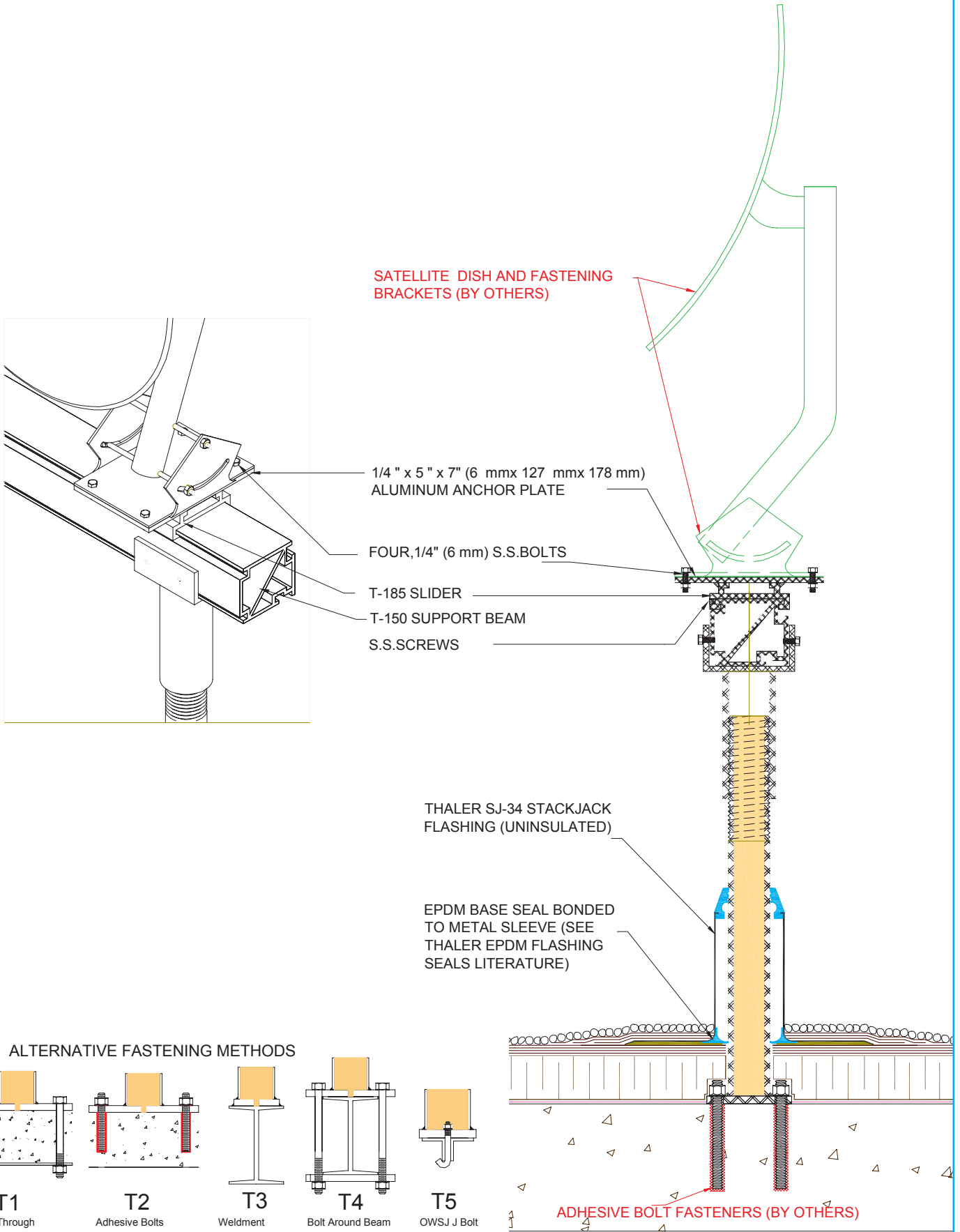
**ModBit:** Torch membrane until bitumen is fluid and set flashing deck flange into fluid. Flash in flange with two overlapping layers of ModBit and seal with asphalt sealer. Do not overheat (melt) EPDM Base Seal.

**Single Ply:** Set flashing deck flange in layer of membrane adhesive and extend single ply up sleeve to highest elevation possible and clamp membrane to STACK JACK Flashing. Note: for PVC membrane, specify PVC coated aluminum, etc. STACK JACK by adding suffix P to model number, e.g. ARS-590-A-P; weld roofing to deck flange using PVC torch.

**Precautions:** Apply an asphaltic or other type protective coating to aluminum STACK JACK Flashing to a height of 2" (51 mm) above a limestone ballast to avoid corrosive reaction. Also, if coating deck flange with a bituminous point on site, allow 24 hours for drying before applying roof membrane.

**Cross-Bar Carrier Assembly:** Thread hollow aluminum upper supports onto lower support legs, install cross-bar carrier and anchor plate assemblies, place satellite dishes onto plate assemblies and secure using dish fastening brackets (by others).

**Ordering and Availability:** Specify flashing material required by adding appropriate suffix to model number e.g. ARS-590-A, for aluminum, etc. Available throughout North America. Contact Thaler for list of distributors and current cost information. Most product are readily available from stock.



Specify the fastening method required by adding the appropriate suffix to model number e.g. ARS-590 (T1) T5

**ARS-590 MULTIPLE SATELLITE DISH SUPPORT (SECTION "A")**