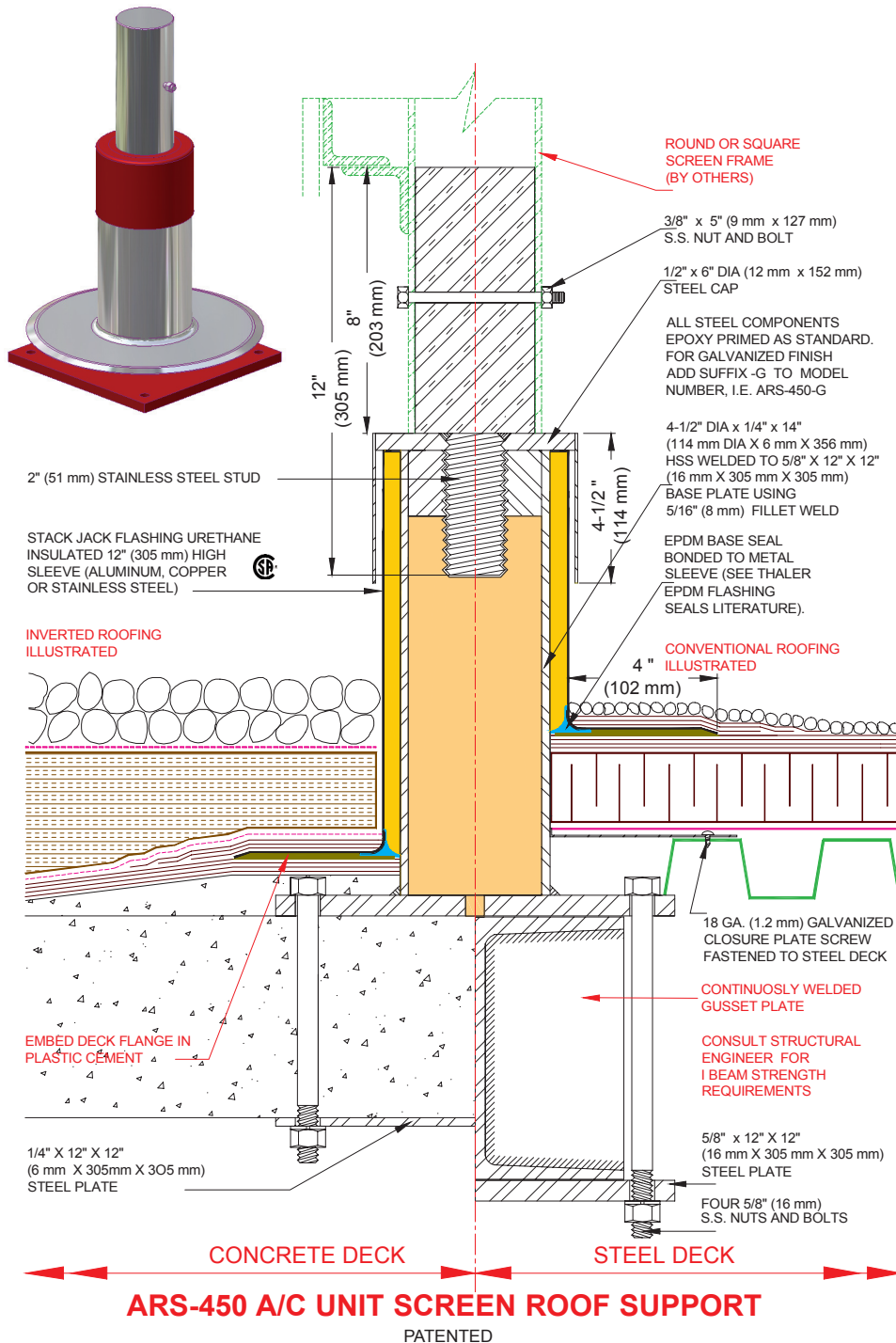


ARS-450 A/C UNIT SCREEN ROOF SUPPORTS



DESCRIPTION

Thaler ARS-450 A/C Unit Screen Roof Support consists of a urethane insulated, epoxy primed, hollow steel support and mounting plate, and threaded steel cap with 4" (102 mm) diameter or 4" (102 mm) square stainless steel screen frame adapter stub (screen frame by others). A urethane insulated flashing, available in aluminum, copper, or stainless steel, with EPDM Base Seal, completes the assembly.

Prominent Features: Condensation free. Maintenance free (never needs caulking).

Options: PVC coated flashing deck flange for PVC roof membrane. Bituminous painted flashing deck flange for BUR and ModBit roof membrane. Adapter stub is available round or square.

RECOMMENDED USE

Suitable for all flat roofs as an A/C unit screen roof support.

WARRANTY

20 year warranty against **leaks, condensation and defects** in materials and/or manufacture when installed in accordance with Thaler "Installation Instructions". Copy of Warranty Certificate available upon request.

MAINTENANCE

No maintenance required (maintenance free).

SPECIFICATION (Short Form)

A/C unit screen roof supports: Thaler ARS-450 epoxy coated urethane insulated, hollow steel support including appropriate fastening to structural roof deck (adhesive type by others); threaded steel cap with 4" (102 mm) [dia.] [square] stainless steel screen frame adapter stub and 3/8" (9 mm) s.s. retaining bolt; galvanized to CSA 164-M1992; manufacturer's standard urethane insulated [.064" (1.6 mm) mill finish 1100-OT alloy aluminum] [.032" (0.831 mm) 24 oz. copper] [.031" (0.79 mm) 22 ga. Type 304 stainless steel] flashing and EPDM Base Seal [and] [PVC coated deck flange] [bituminous painted deck flange]; manufactured by Thaler Metal Industries, 1-800-387-7217 (Mississauga, Ontario, Canada) or 1-800-576-1200 (New Braunfels, TX), installed as per manufacturer's written instructions. Provide 20 year warranty against leaks, condensation and defects in materials and/or manufacture.

INSTALLATION

"Installation Instructions" are provided with every Thaler product. Essentially, the Thaler ARS-450 Roof support is installed by fastening the mounting plate to the structural roof deck, placing the flashing sleeve over the support and roof membrane, installing the steel cap/screen frame adapter, attaching the screen framing (by others), and as follows.

BUR: Set flashing deck flange in layer of plastic cement and flash in with 3 overlapping layers of felt flashing.

ModBit: Torch membrane until bitumen is fluid and set flashing deck flange into fluid. Flash in flange with two overlapping layers of ModBit and seal with asphalt sealer. Do not overheat (melt) EPDM Base Seal.

Single Ply: Set flashing deck flange in layer of membrane adhesive and extend single ply up sleeve to top of metal flashing and then screw cap down over single ply. Note: for PVC membrane, specify PVC coated aluminum, etc. flashing deck flange and add suffix P to end of model number e.g. ARS-450-A-P; weld roofing to deck flange using PVC torch.

Precautions: Apply an asphaltic or other type protective coating to *aluminum* flashing to a height of 2" (51 mm) above a *limestone* ballast to avoid corrosive reaction. Also, if coating deck flange with a bituminous paint on site, allow 24 hours for drying before applying roof membrane.

Screen Frame Components: Thread cap/stainless steel adapter stub onto lower support leg, place screen frame posts (by others) over adapter, bolt into place, and install screen (by others)

Ordering and Availability: Specify flashing material required by adding appropriate suffix to model number e.g. ARS-450-A, for aluminum, etc. Available throughout North America. Contact Thaler for list of distributors and current cost information. Most products are readily available from stock..

