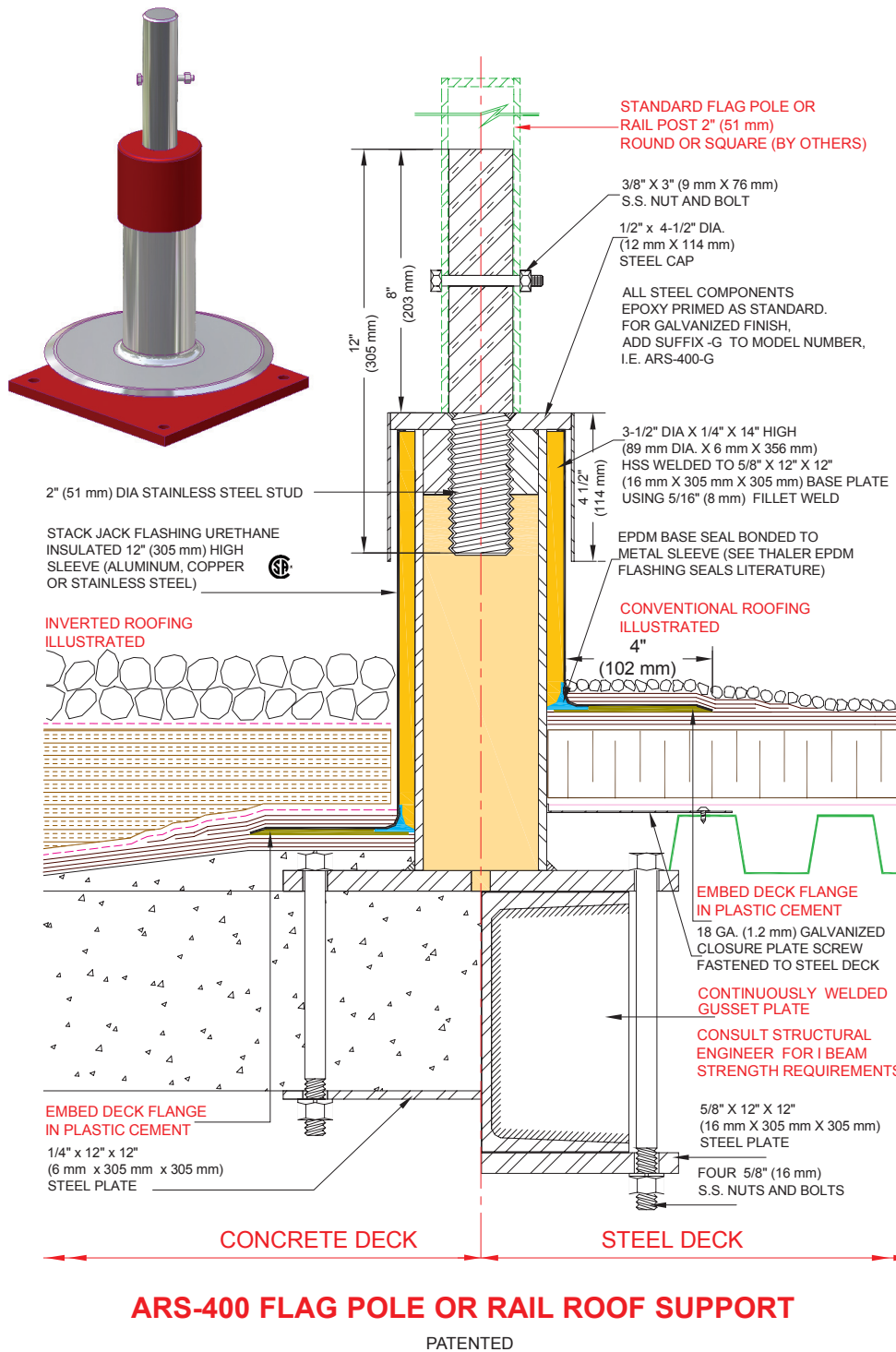


ARS-400 FLAG POLE OR RAIL ROOF SUPPORTS



DESCRIPTION

Thaler ARS-400 Flag Pole or Rail Support consists of a urethane insulated, epoxy primed, hollow steel support and deck mounting plate threaded steel cap with 2" (51 mm) diameter stainless steel flag pole/rail adapter stub. A urethane insulated flashing, available in aluminum, copper, or stainless steel, with EPDM Base Seal, completes the assembly.

Prominent Features: Condensation free. Maintenance free (never need caulking).

Options: PVC coated flashing deck flange for PVC roof membrane. Bituminous painted flashing deck flange for BUR and ModBit roof membrane. See Thaler ARS-115 for alternative rail support.

RECOMMENDED USE

Suitable for all flat roofs as a flag pole or rail roof support.

WARRANTY

20 year warranty against **leaks, condensation and defects** in materials and/or manufacture when installed in accordance with Thaler "Installation Instructions". Copy of Warranty Certificate available upon request

MAINTENANCE

No maintenance required (maintenance free).

SPECIFICATION (Short Form)

[Flag Pole] [Rail] roof supports:

Thaler ARS-400 epoxy coated, urethane insulated hollow steel support, including appropriate fastening to structural roof deck (adhesive type by others), and threaded steel cap with [2" (51 mm) dia. s.s. adapter stub] [s.s. stub machined or tapered to receive I. D. flag pole] and 3/8" (9 mm) s.s. retaining bolt; galvanizing to CSA G164-M1992; manufacturer's standard urethane insulated [.064" (1.6 mm) mill finish 1100-OT alloy aluminum] [.032" (0.831 mm) 24 oz. copper] [.031" (.079 mm) 22 ga. Type 304 stainless steel] flashing and EPDM Base Seal [and] [PVC coated deck flange] [bituminous painted deck flange]; manufactured by Thaler Metal Industries, 1-800-387-7217 (Mississauga, Ontario, Canada) or 1-800-576-1200 (New Braunfels, TX), installed as per manufacturer's written instructions. Provide 20 year warranty against leaks, condensation and defects in materials and/or manufacture.

INSTALLATION

"Installation instructions" are provided with every Thaler product. Essentially, the Thaler ARS-400 Roof Support is installed by fastening the mounting plate to the structural roof deck, placing the flashing sleeve over the support and roof membrane, installing the steel cap/flag pole or rail adapter, attaching the flag pole or rail (by others) and as follows:

BUR: Set flashing deck flange in layer of plastic cement and flash in with 3 overlapping layers of felt flashing.

ModBit: Torch membrane until bitumen is fluid and set flashing deck flange into fluid. Flash in flange with two overlapping layers of ModBit and seal with asphalt sealer. Do not overheat (melt) EPDM Base Seal.

Single Ply: Set flashing deck flange in layer of membrane adhesive and extend single ply up sleeve to top of metal flashing and then screw cap down over single ply. Note: for PVC membrane, specify PVC coated aluminum, etc. flashing deck flange by adding suffix P to end of model number e.g. ARS-400-A-P; weld roofing to deck flange using PVC torch.

Precautions: Apply an asphaltic or other type protective coating to aluminum flashing to a height of 2" (51 mm) above a limestone ballast to avoid corrosive reaction. Also, if coating deck flange with a bituminous paint on site, allow 24 hours for drying before applying roof membrane.

Flag Pole or Rail Components: Thread cap/stainless steel adapter stub onto lower support leg and mechanically attach flag pole or rail (by others).

Ordering: Specify flashing material required by adding appropriate suffix to model number e.g. ARS-400-A., for aluminum, etc. Available throughout North America. Contact Thaler for list of distributors and current cost information. Most products are readily available from stock.

